



OVERVIEW: INDONESIA POPULATION AND HOUSING CENSUSES

Mariet Tetty Nuryetty
mariet@bps.go.id

Session 2b

Population and Housing Censuses; Registers of Population, Dwelling, and Buildings
Brunei, 22-24 August 2017

INDONESIA



consist of:

- 34 Provinces
- 514 Districts/Municipalities
- 7,145 Sub-districts
- 82,395 Villages
- 633 Ethnic groups
- 1,158 Languages
- 17,504 islands; ab 13,000 islands inhabited

MAP OF INDONESIA

indonesia_rel_2002.jpg (JPEG Image, 1377x926 pixels) - Mozilla Firefox

File Edit View History Bookmarks Tools Help

http://images.nationmaster.com/images/motw/middle_east_and_asia/indonesia_rel_2002.jpg

Getting Started Latest Headlines

indonesia_rel_2... (0 unread) Yahoo! ... Indonesia Map - M... Indonesia Map, Su... Asian Maps, Maps ... INDONESIA MAP - ... Indonesia Map: Ac... Map of Indonesia - ...

The map displays the following regions and islands:

- Malaysia:** Peninsular Malaysia (Kuala Lumpur), Sarawak (Kuching), and Sabah (Kota Kinabalu).
- Brunei:** Bandar Seri Begawan.
- Singapore:** Singapore.
- Indonesia:** Sumatra (Padang, Palembang), Greater Sunda Islands (Java, Bali, Lombok, Sumbawa, Flores, Sumba), Kalimantan (Singkawang, Banjarmasin), Borneo (Samarinda, Balikpapan), Sulawesi (Celebes) (Makassar, Manado), Maluku (Ternate, Tidore), Irian Jaya (Jayapura), and Papua (Timika).
- Other Islands:** Palau, New Guinea, East Timor (Dili), and Christmas Island (Australia).
- Water Bodies:** South China Sea, Sulu Sea, Celebes Sea, Molucca Sea, Banda Sea, Timor Sea, Arafura Sea, Java Sea, and Pacific Ocean.
- Geographical Features:** Strait of Malacca, Selat Karimata, Selat Sunda, and the Equator.

Done

On-Screen Keyboard

start On-Screen Keyboard indonesia_rel_2002.j... NADIRA RH (F:) Indonesia 2010 Cens... Presentation1 7:40 AM

HISTORY OF THE CENSUS



- BPS-Statistics Indonesia has had a long experience in undertaking Population and Housing Censuses, besides the responsibility of collecting, interpreting, and disseminating other fields of statistics.
- The Population and Housing Censuses of Indonesia were conducted for the years 1961, 1971, 1980, 1990, 2000, and 2010. The 2020 Population and Housing Census was the seventh decennial census undertaken since the independence of Indonesia in 1945.

2010 POPULATION CENSUS LEGAL BASIS



- ❑ **Law No.16/1997**
The Statistical Act
- ❑ **Government regulation No.51/1999**
 - + **On the implementation of statistical operation**
- ❑ **Other Ministerial Decrees**
 - + **Issued by other Ministries to support the 2010 Census activities**

Some issues



Expectations:

- initial data base for developing system of civil registration (information to be collected: individual and households level data);
- Population picture and trends, and MDGs achievements.

Geographical context:

- 17,504 islands: $\pm 13,000$ islands inhabited;
- data collection in inhabited islands.

Statistical mapping in inhabited islands → created 728,000 census block maps.

Intensive campaign to:

- better inform public about the important and benefit of census;
- get awareness and cooperation from people.

THE 2010 POPULATION CENSUS FIELD OPERATION



1

Field workers

Number of Field Workes Employed

392,655 Enumerators
130,885 Team Coordinators.
15,773 Field Coordinators.
1,600 Quality Assurance workers
(Students of the Statistical
Institute)

2

Training

Number of Training Classes Organized

6 classes for Master Trainers
665 classes for Regional Trainers
21,597 classes for Enumerators/Team
Coordinators.
64 classes for Quality Assurance
Workers

THE 2010 POPULATION CENSUS AS THE BASIS FOR:



1. Updating the population data bases down to the lowest administrative level (village);
2. Monitoring progress in achieving the Millennium Development Goals (MDG);
3. Preparing small-area statistics;
4. Preparing population projections; and
5. Developing sampling frames for various surveys conducted between 2010-2020.

THE 2010 POPULATION CENSUS QUESTIONNAIRES



Three kinds of questionnaires:

1. **C1 – 42 questions**, for people living in households in the areas covered by census mapping;
2. **C2 – 14 questions**, for people living in areas which were not included in the mapping, such as remote/isolated areas, Indonesian diplomats living abroad, etc.; and
3. **L2 – 2 questions** (number and sex), for homeless, people living on boats, crews of Indonesian ships, and isolated tribal population.

ITEMS COLLECTED IN THE CENSUS USING FORM C1



Basic demographic characteristics: sex, age, relationship to head of household, marital status;

Fertility: number of children ever born and still living;

Mortality: including child, adult and maternal mortality;

Migration (district level): place of birth, current residence, place of residence 5 years ago;

Education: school attendance, educational attainment, literacy;

ITEMS COLLECTED IN THE CENSUS USING FORM C1 (2)



Socio-cultural: religion, ethnic group, citizenship, ability to speak Indonesian, daily language used at home;

Disability (ICF recommendation);

Economic activity during previous week: main industry, employment status; and

Housing: housing ownership, floor area and type, sources of drinking water, fuel for cooking, lighting, toilet facilities; and

Usage of ICT.

DATA COLLECTION APPROACH



Face-to-face interviews

Self enumeration

- Using paper questionnaires

DATA COLLECTION METHOD



1. Enumeration period: May 2010; census date 15 May.
2. 2-stage enumeration was employed:
 - 1st stage: listing procedure: name of HH heads, number of HH members by sex was listed by enumerator to every HHs in all CBs.
 - 2nd stage: every HH enumerated using Long Form Questionnaire (43 vars).

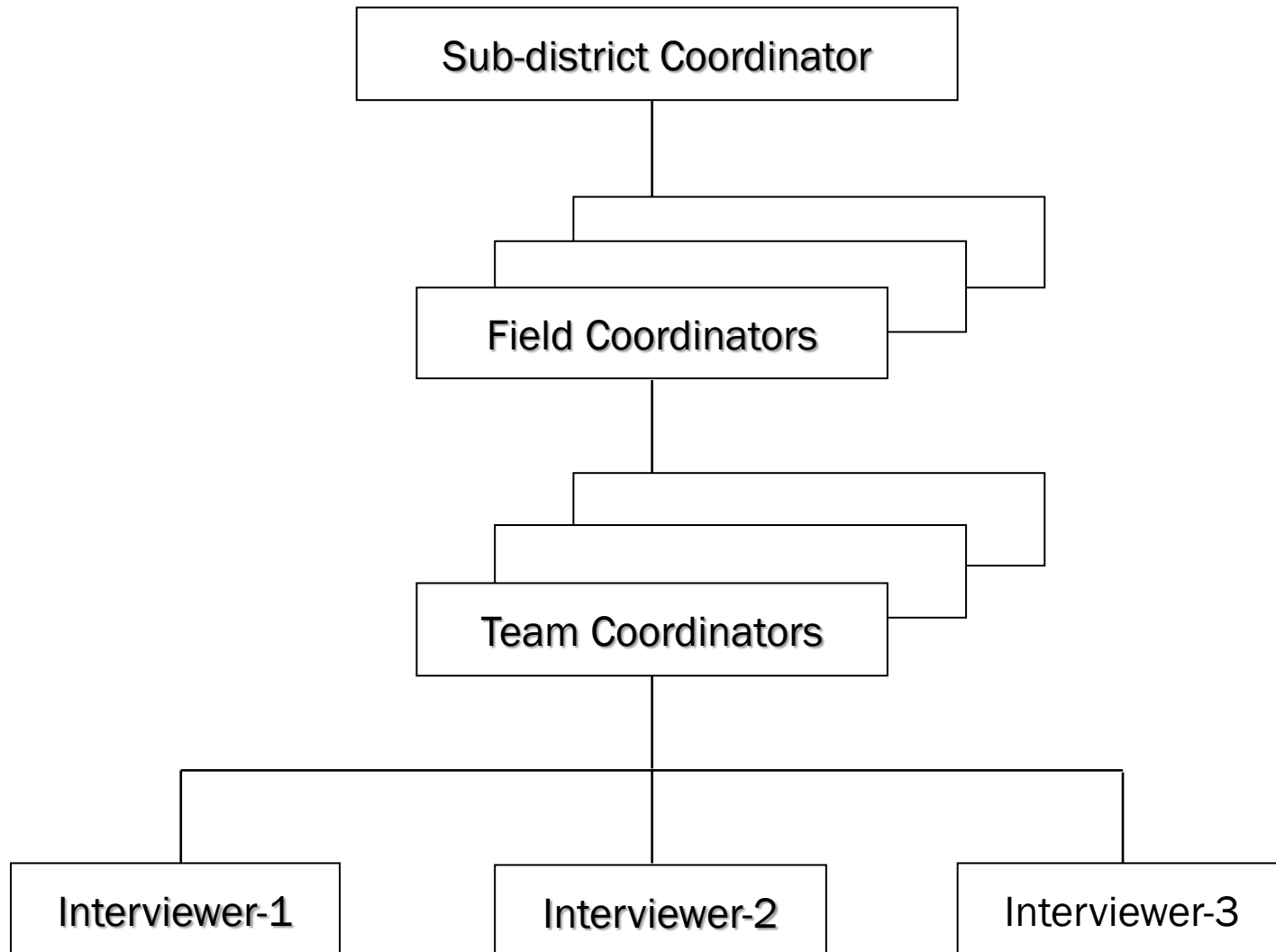
Long form questionnaire:

- ❖ Individual level data: demographic, education, health, employment, fertility, mortality, migration, ethnicity/race, language 4
- ❖ Household level data: housing ownership, physical quality, utility

Data collection for non-permanent residential people:
Homeless, boat people, sailors.

Quick count was done to recap people from census blocks up to village, sub district, district, province to be announced by August 2010.

FIELD ORGANIZATION IN EACH SUB-DISTRICT FOR THE 2010 PC



MONITORING AND QUICK COUNT REPORTING



- All mobile phone numbers of Field Coordinators, Sub-district Coordinators, and District Coordinators must be recorded.
- After completing the listing of each CB, Field Coordinators sent messages (sms/text) through mobile phones to the BPS server.
- Message: ID of CB, No. of HHs, Males, Females, Total
- BPS disseminated all information on Website
- Comparisons made between no. of HH in the mapping and census listing
- District coordinators sent all completed listings through email from BPS District Offices everyday

DATA QUALITY MONITORING



- Early warning system to locate the occurrence of possible non- sampling errors to indicate inconsistency between data collected by enumerators and monitoring officers => facilitate BPS district coordinator to take necessary measures.
- Report the possible errors via SMS.
- Control and monitor inconsistency
 - ❖ Household members: relationships between household members and their guardian, number of household members, sex, group of ages, education attainment, marital status, etc.
 - ❖ Housing: floor types, sources of drinking water, electricity sources, toilet facilities, dwelling ownership, etc.
 - ❖ Coverage: map quality, enumerating direction, enumerating procedures, pasting sticker, physical buildings, etc.

Implementation:

- ❖ 382 districts, 1,146 sub districts, 7,772 census blocks.
- ❖ 1,600 monitoring officers (1,200 students of statistical college and BPS HQ).

MAJOR UTILIZATIONS OF THE CENSUS DATA



- To provide data for development policy, planning and programs down to the lower administrative levels.
- To estimate basic demographic parameters.
- To update population projections and sampling frame(s) for the coming surveys.
- To provide framework for population-based targeting of both sectoral and regional development programs.
- To evaluate the achievement of MDGs at both regional (down to district level) and national levels.

2010 PC Logo and Motto
BE SURE YOU ARE COUNTED





THANK YOU