

EXPERIENCES ON TURKISH STATISTICAL BUSINESS REGISTERS

July 2017

ANKARA

Can DOĞAN

candogan@tuik.gov.tr

CONTENT

- A Brief History
- Aim
- Use of Administrative Sources
- Key Features of Statistical Business Registers (SBR)
- Scope, Legislation and Classifications
- Units in SBR
- Variables
- Sources in BR
- Framework, Preparation of Turkish Annual SBR Frame
- Users of BR
- Institutional Sector Classification
- Future of SBR

A BRIEF HISTORY

- Last General Census of Businesses in 2002
- Statistics Law (2005) to comply with the EU and national needs
- Decide to use Ministry of Finance (MoF) records as the main source
- A legal agreement on data transfer in 2005
- Transformation into statistical units
- Changes and improvements on the methods and processes in time
- Enriching the data sources in time

AIM

- To establish a SBR based on administrative sources
- To include common statistical units comparable
- To produce demographic variables
- To analyze Multinational Enterprise Groups at global level
- To establish an SBR a comprehensive source for business surveys

USE of ADMINISTRATIVE SOURCES

Using administrative sources is useful;

- Cost
- Response Burden
- Data Quality

Using administrative sources is possible;

- Legal Ground
- Use of unique identifier
- Good coverage
- Cooperation
- Public opinion

KEY FEATURES OF SBR

- Registered units (local units, enterprises, enterprise groups)
- Contributing to Gross Domestic Product
- EU standards and norms
- Classifications
- Comparability
- Up to date information

SCOPE

Geographical Scope: Whole Turkey

Activity Scope: **Except**

- public adm.and defense; compulsory soc. sec. (**Section O**)
- Activities of Households (**Section T**)
- International Organizations (**Section U**)
- Renting privately (Nace Rev.2 code **6820**)

Economic Scope: All enterprises contributing to the Gross Domestic Product, their local units, legal units that make up enterprises and enterprise groups

P.S.Tax payers paying

- ✓ *annual income tax for commercial income*
- ✓ *corporate tax*
- ✓ *value added tax*

LEGISLATION

- Regulation (EC) no **177/2008** of The European Parliament and of the Council establishing a common framework for business registers for statistical purposes
- Council Regulation (EEC) No **696/93** on the statistical units for the observation and analysis of the production system in the Community

CLASSIFICATIONS

- Activity Classification
 - ✓ *NACE Rev.1 for years 2005-2008*
 - ✓ *NACE Rev.2 from 2009 onwards*

- Regional Classification
 - ✓ *NUTS I 12 Region*
 - ✓ *NUTS II 26 Region*
 - ✓ *NUTS III 81 Province*

UNITS IN SBR

The units in SBR:

- Enterprise
- Local Unit
- Enterprise Group

The units not statistical:

- Legal unit - Recognized by law and registered officially
- Administrative unit – specifically designed for the purposes of conforming to an administrative regulation, VAT or Social Security
- Operational unit - defined by a legal unit for the purposes of organising itself, for example, a division, branch, warehouse or outlet
- Observational unit
- Reporting unit

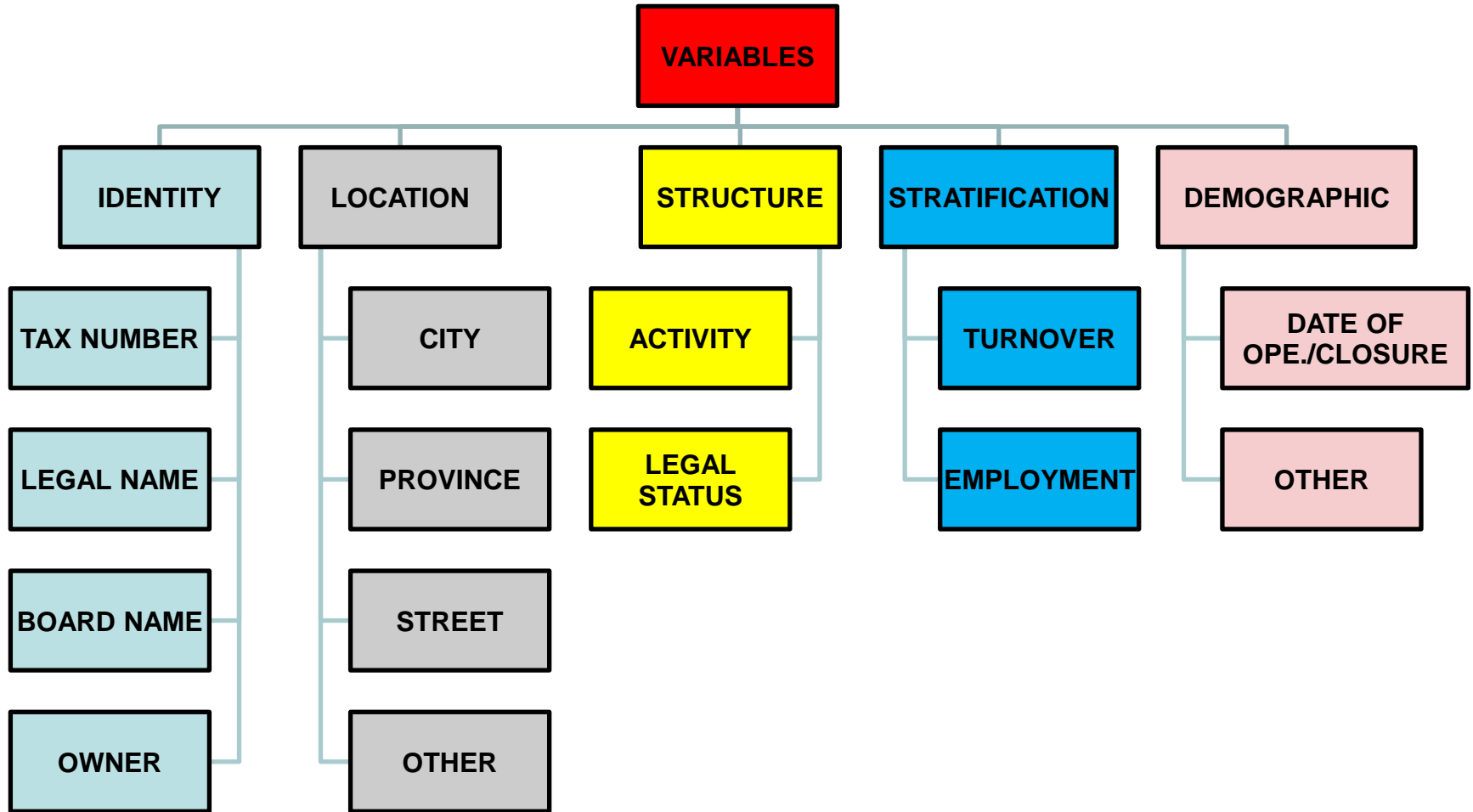
UNITS IN SBR

Enterprise is the smallest combination of legal units that is an organizational unit producing goods or services which benefits from a certain degree of autonomy in decision-making, especially for the allocation of its current resources

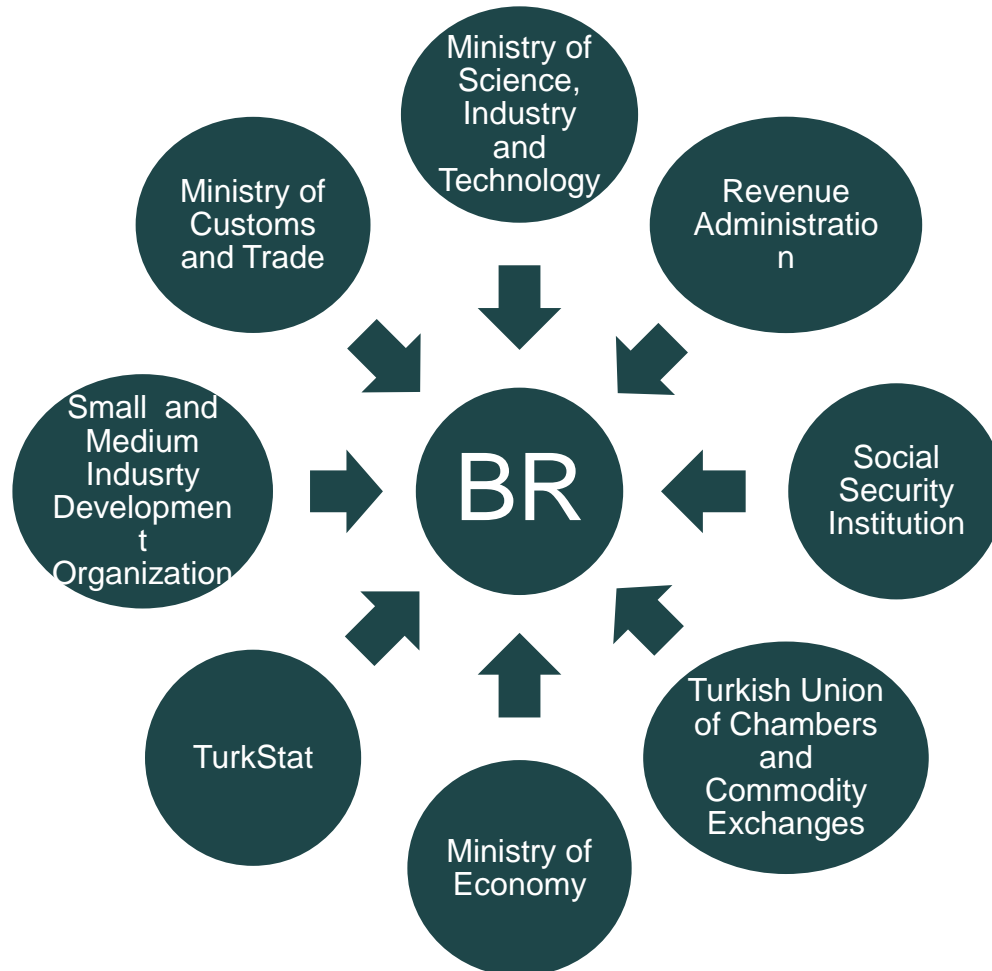
Local Unit is an enterprise or part thereof (a workshop, factory, warehouse, office etc.) situated in a geographically identified place

Enterprise Group is a set of legal units bound together by legal and/or financial links under the same control

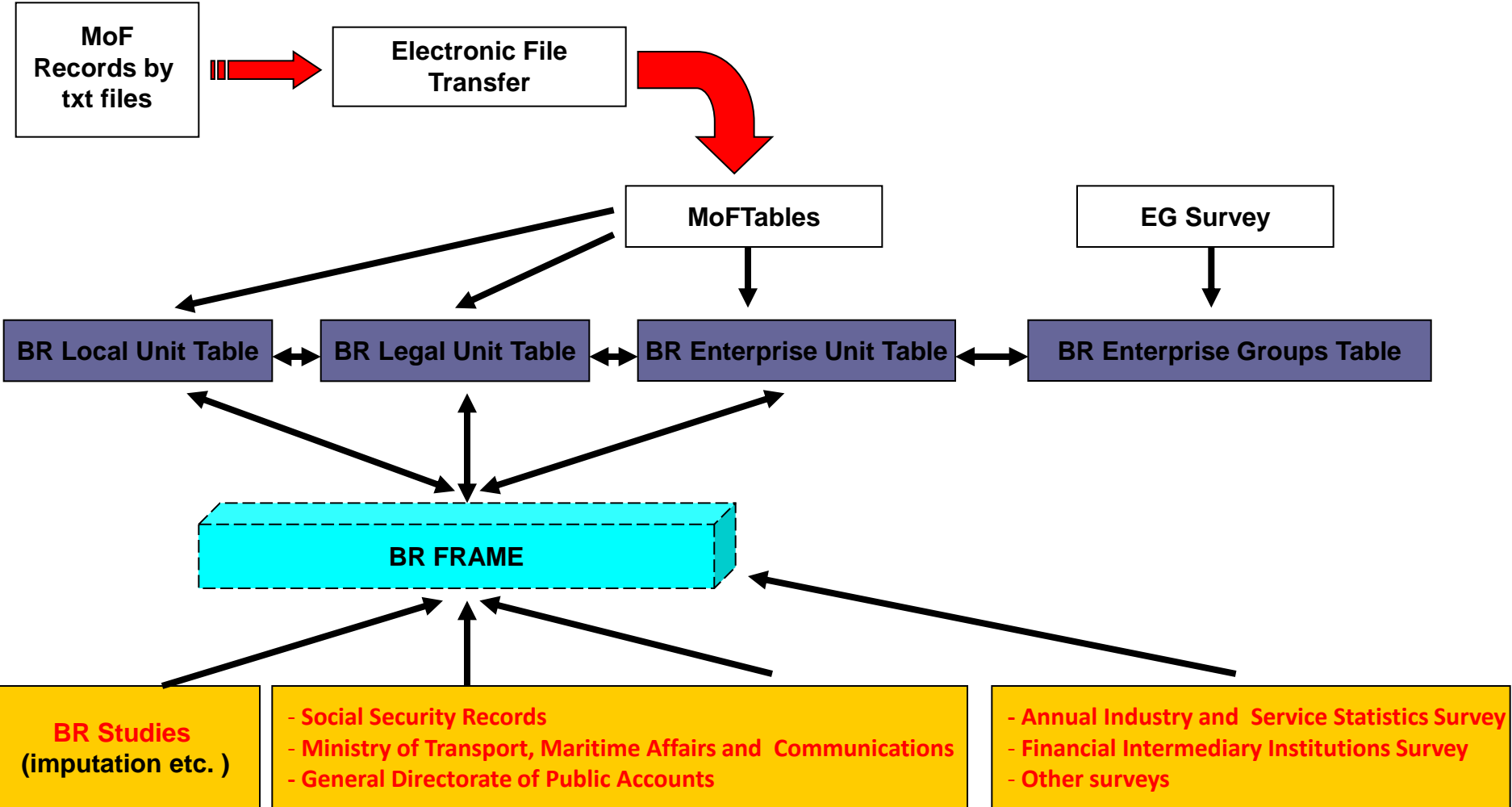
VARIABLES



SOURCES IN BR



FRAMEWORK



PREPARATION OF TURKISH ANNUAL SBR FRAME

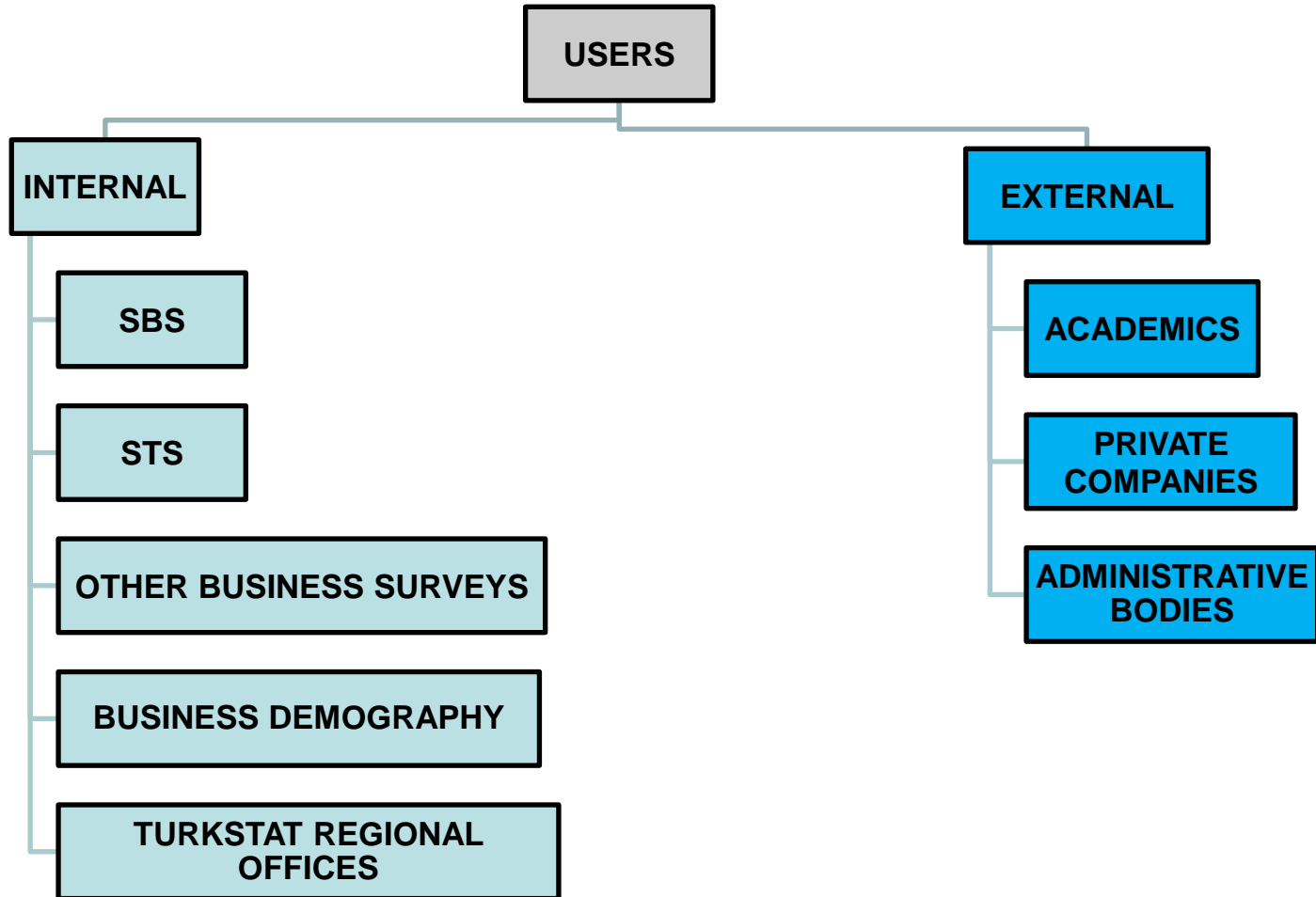
- Oracle database
- MoF records in text file
- Imported into our database through automated procedures
- The problems faced during the data transmission are detected and corrections are made
- Calculations in terms of turnover and employment
- Matching with the previous BR frame

PREPARATION OF TURKISH ANNUAL SBR FRAME

Updating from Surveys

- Annual Industry and Service Statistics Survey with respect to address components, turnover, number of persons employed and activity figures
- Financial Intermediary Institutions Survey
- Other surveys

USERS OF BR



INSTITUTIONAL SECTOR CLASSIFICATION

SECTORS:

- S.11:** Non-financial corporations (*Private non-financial companies, Public enterprise, Municipal economic enterprise, etc.*)
- S.12:** Financial corporations (*Banks, financial intermediary institutions, insurance companies, etc.*)
- S.13:** General government (*Enterprises covered in NACE Rev.2 -84 (O-Public administration and defence, compulsory social security), 85(P-Education) and 86 (Q-Human health services)*)
- S.14:** Households (*Number of persons employed is less than 5, Taxed in the simple entry, Sole proprietorship or simple partnership*)
- S.15:** Non-profit institutions serving households (*Foundations, associations, etc.*)
- S.2:** Rest of the world (*International organizations, etc.*)

INSTITUTIONAL SECTOR CLASSIFICATION(Cont.)

Administrative Sources:

- General Directorate of Accounting
- Council of Higher Education
- Ministry of Education
- Ministry of Health
- Ministry of Treasury
- Business Registers Frame

INSTITUTIONAL SECTOR CLASSIFICATION(Cont.)

Distribution of Institutional Sectors in BR

SECTORS	# of ENTERPRISE	PERCENTAGE (%)
S.11	2.923.358	79.88
S.12	23.759	0.65
S.13	16.373	0.56
S.14	652.297	17.82
S.15	44.009	1.2

INSTITUTIONAL SECTOR CLASSIFICATION(Cont.)

Current Status:

- Since 2013, # of public information is given according to the NACE Rev.2. sections in the Annual Business Registers Inquiry of Eurostat.

- Institutional sector classification studies are held by Business Registers annually according to the suggestions of National Accounts.

- In order to obtain better data quality, studies are still ongoing on the available administrative sources.

THANK YOU