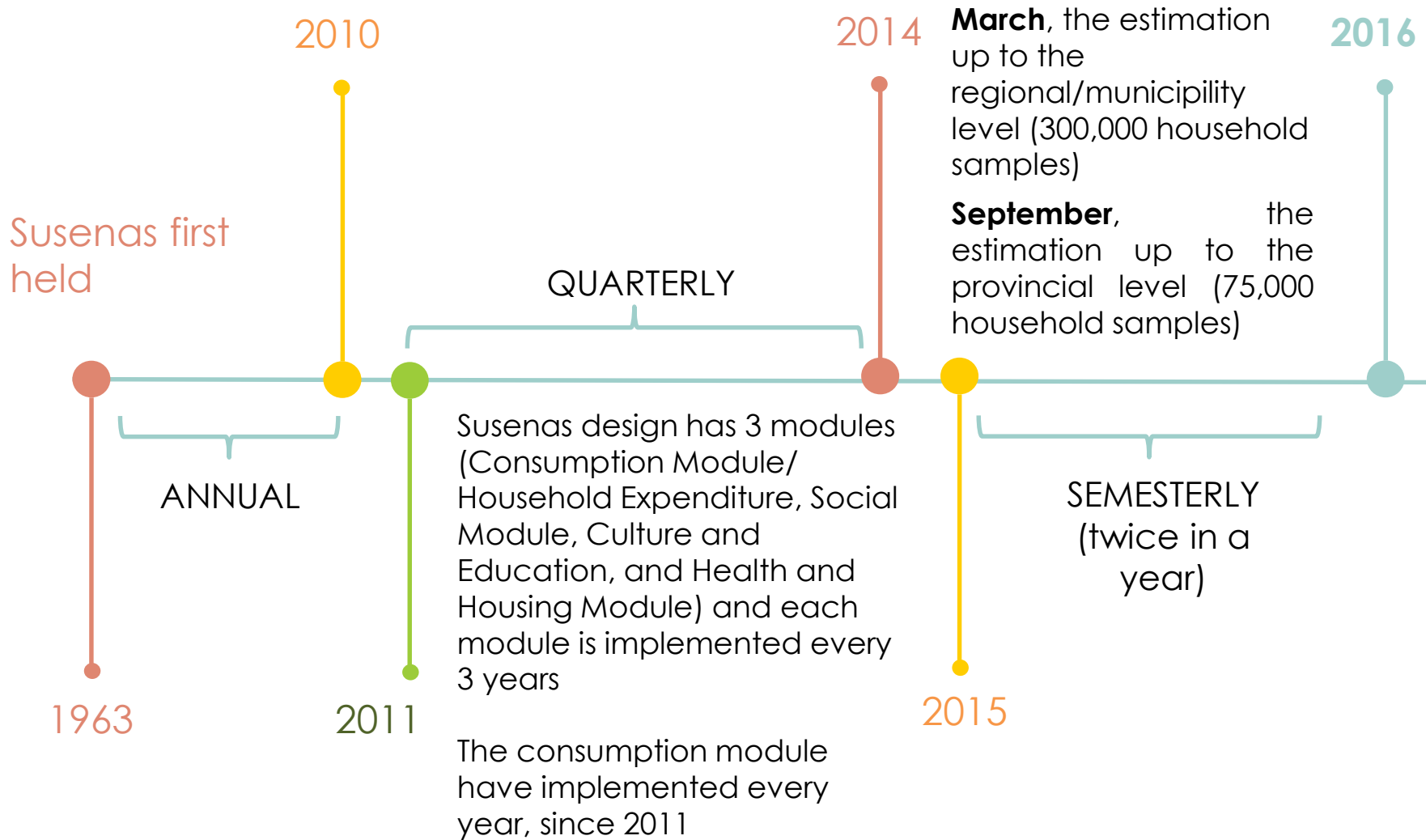




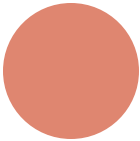
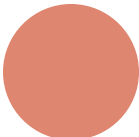
National Socio Economic Survey (Susenas)



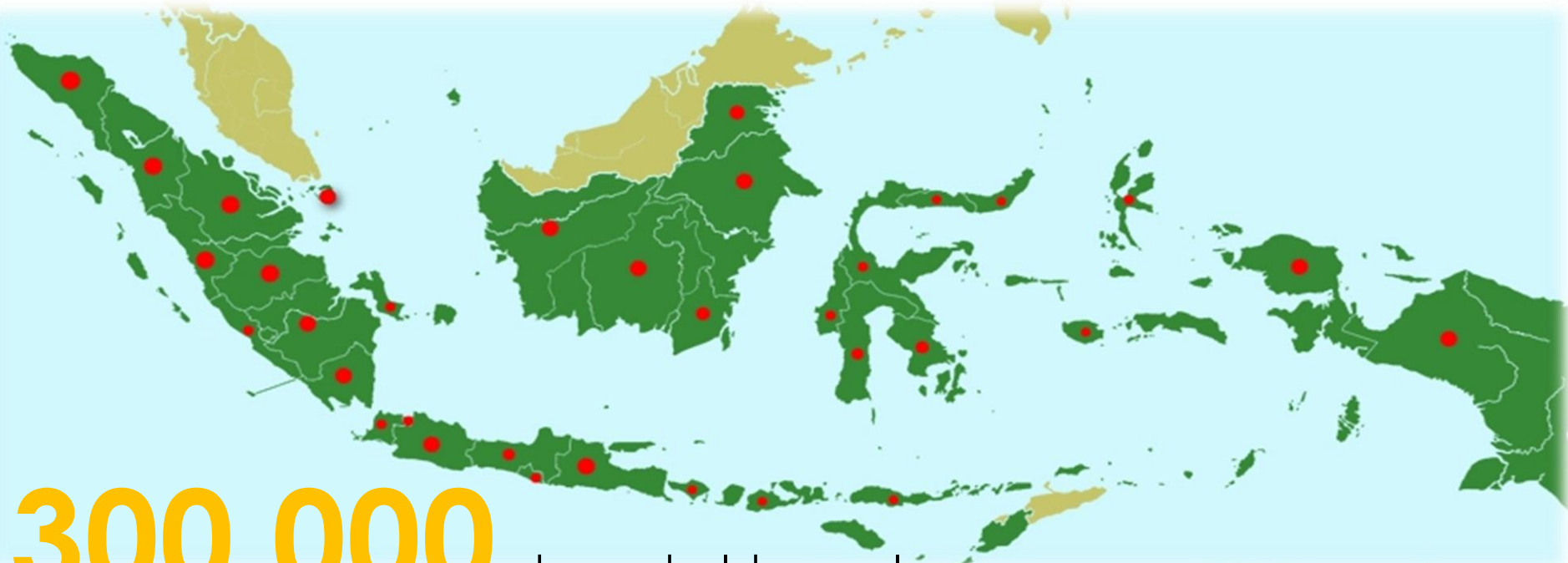
UMUM



OBJECTIVES

-  Collecting data public welfare in the aspect of: health, education, fertility, family planning, housing, travel, crime, and other social and economic conditions.
-  Collecting consumption and expenditure data.

SCOPES



300.000

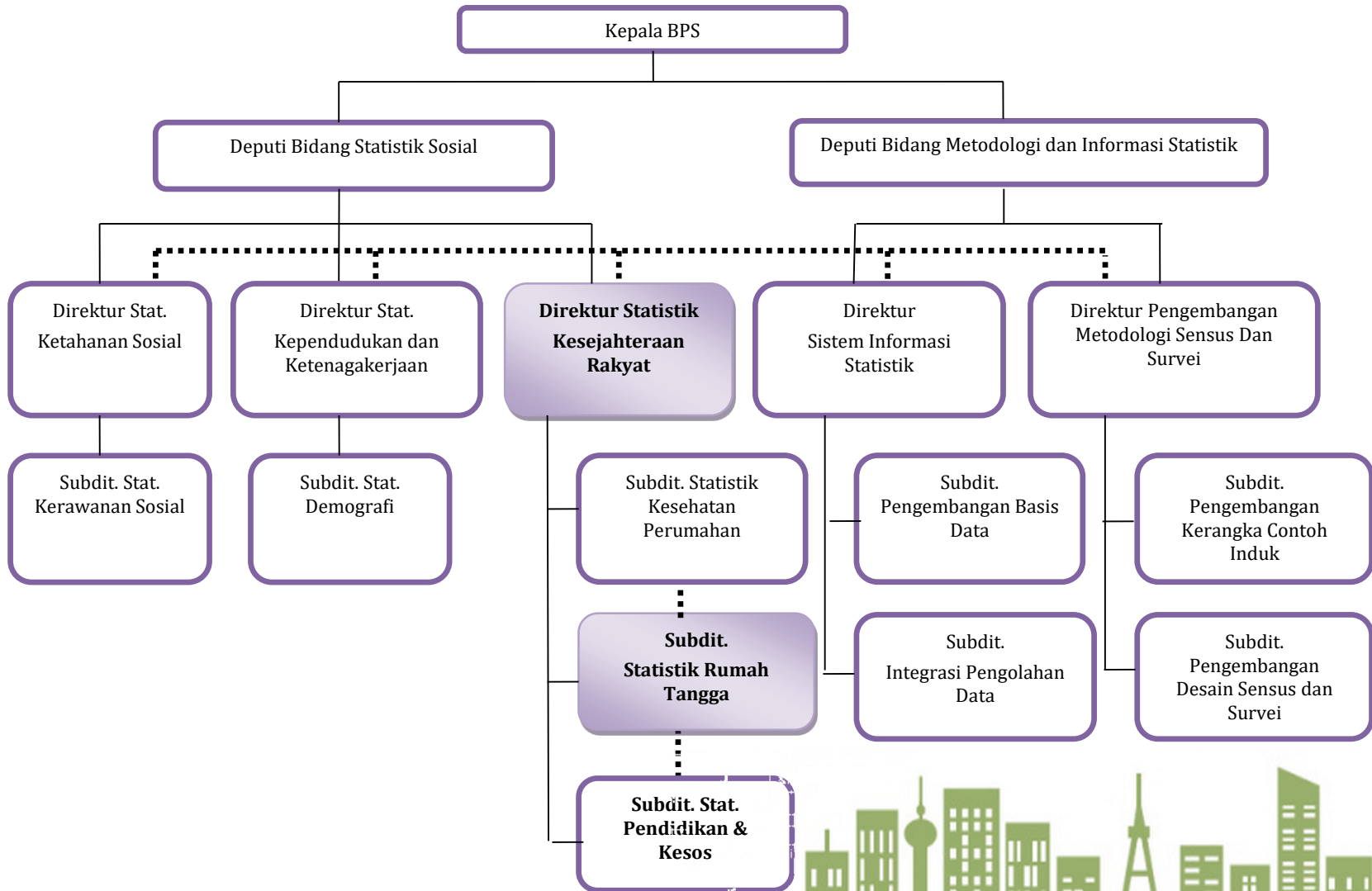
household samples
spread over

34 provinces

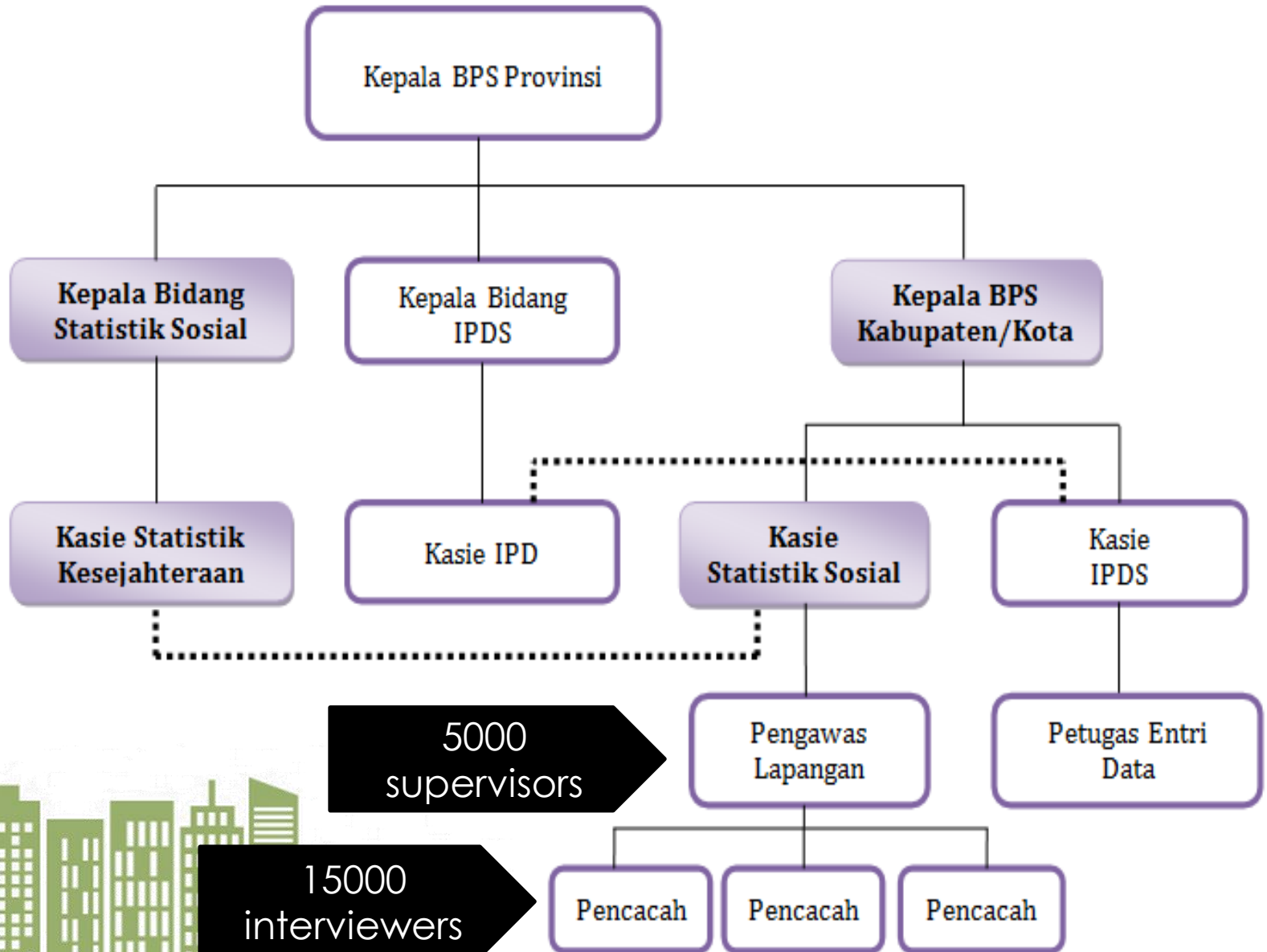
And

514 region/municipality
in Indonesia

ORGANIZATIONAL STRUCTURE IN NATIONAL LEVEL



ORGANIZATIONAL STRUCTURE AT PROVINCIAL & DISTRICT LEVEL x



STAGES OF FIELD ACTIVITIES



Household *updating*



Selection of 10 household samples



Collecting data from 10 selected households

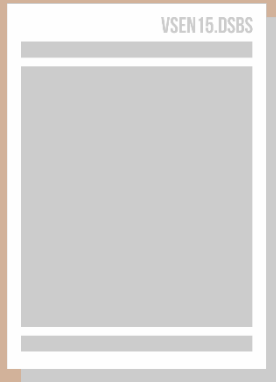


Submission of enumeration results



Supervision/examination

TYPE OF QUESTIONNAIRE



VSEN.DSBS
Sample list
Census Block



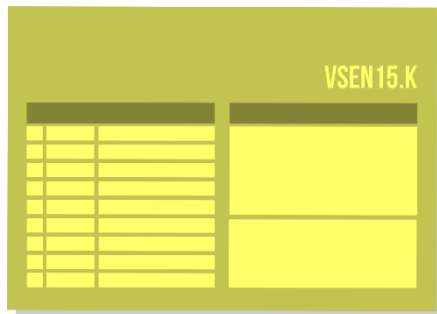
VSEN.P
Updates List of
Household Loads
in the Census Block



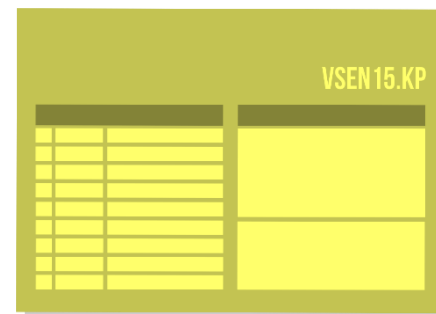
VSEN.DSRT
Sample list
Selected Household



VSEN.MHU
Monitoring List
Updating Result



VSEN.K
Questionnaire
KOR



VSEN.KP
Questionnaire
Consumption/Expenditure



Kor

- Demographics, birth certificates, and early childhood education;
- ART education aged 5 years above;
- Traveling and victims of crime;
- Health complaints, outpatient and health insurance;
- Hospitalization and smoking;
- The existence of biological mother in household, birthplace, residence 5 years ago, and NIK;
- Immunization for toddlers and breast milk for baduta;
- Information and communication technology of ART 5 years above;
- ART 10 years above's employment;
- Fertility, birth attendant, and family planning;
- Housing, social security and ownership of household goods and resources.

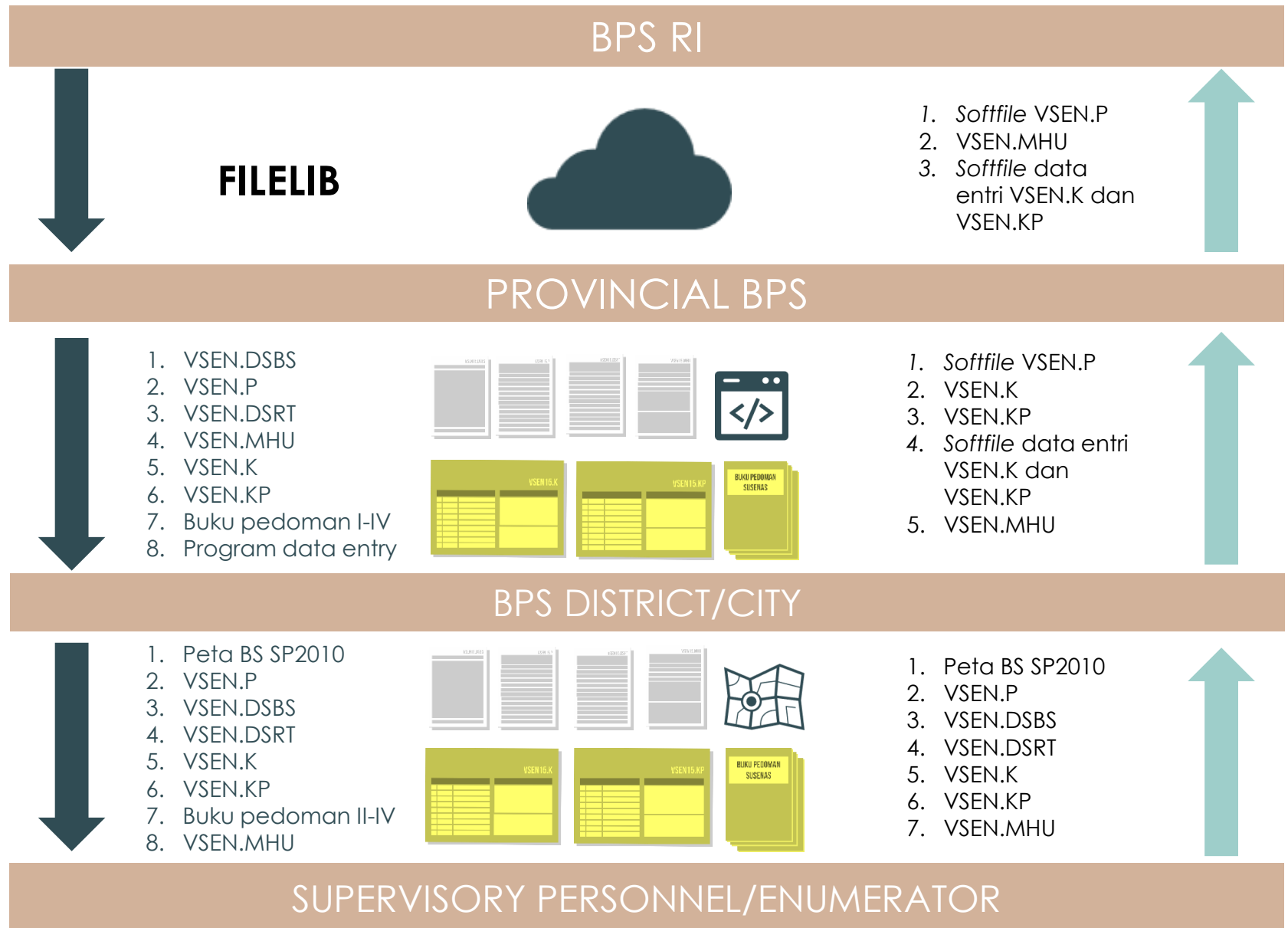
DATA TYPE(2)



Consumption/Expenditure

- The quantity and value of consumption/expenditure of foods, beverages and cigarettes a week ago, includes 112 commodities that divided into 14 groups. Consumption of foods and beverages are distinguished between the consumption of foods and beverages that prepared at home and the consumption of finished food and beverages and cigarettes;
- Expenditures for non-food items during a month and a years (in rupiah) divided into 6 (six) groups;
- Income, earnings, and non-consumption expenditure during the past year are divided into 5 groups.

FLOW OF THE DOCUMENTS





Thank you

