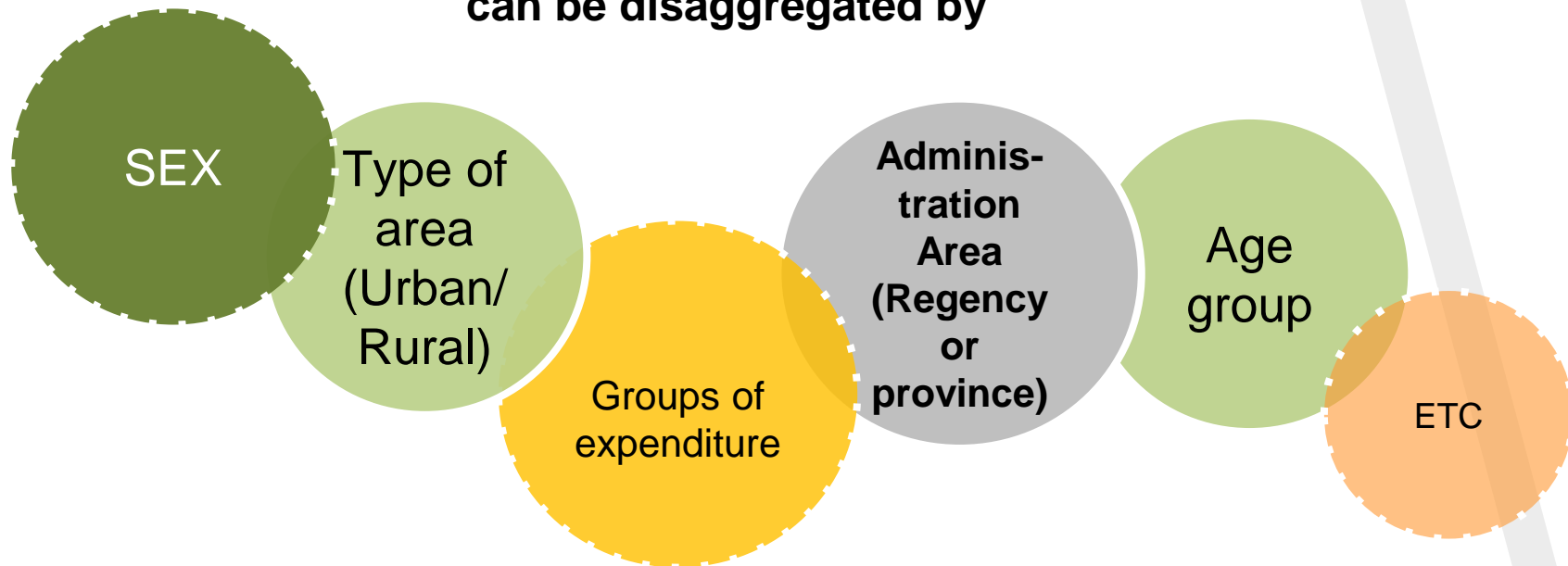


The background features a light gray dashed line forming a large circle. Various colored circles and rings are scattered around the text. In the top left, there is a large teal ring and a smaller teal circle. In the top right, there is a large lime green circle and a smaller green circle. In the bottom left, there is a large green circle with a white center and a smaller yellow circle. In the bottom right, there is a large yellow ring, a medium orange circle, and a small pink circle.

DISEMINATION DATA OF SUSENAS

Data Disaggregation

**Expenditure and Consumption data
can be disaggregated by**



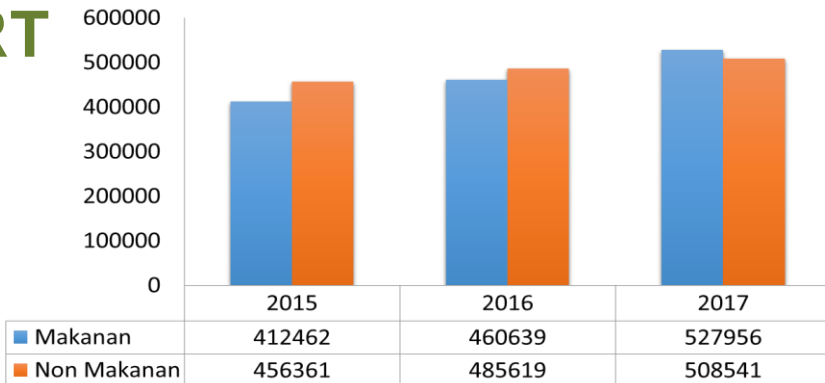


Expenditure Data are presented in:

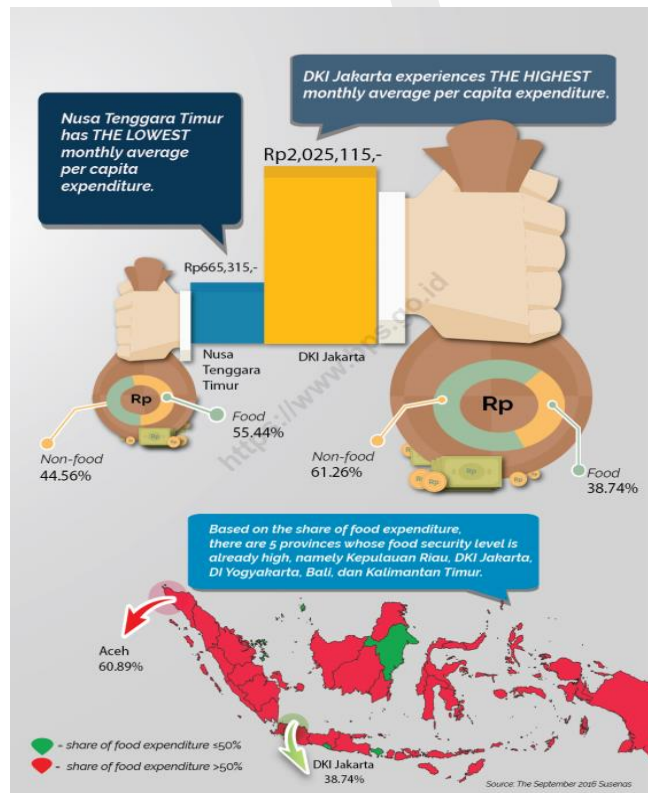
TABLE

| Kelompok Barang Commodity Group (1) | Perkotaan Urban (2) | Perdesaan Rural (3) | Perkotaan+Perdesaan Urban+Rural (4) |
|---|---------------------------|---------------------------|---|
| A. MAKANAN / FOOD | | | |
| 1. Padi-padian / Cereals | 5.47 | 11.41 | 7.70 |
| 2. Umbi-umbian / Tubers | 0.36 | 0.78 | 0.51 |
| 3. Ikan/udang/cumi/kerang/ Fish/shrimp/common squid/shells | 3.10 | 4.66 | 3.69 |
| 4. Daging / Meat | 2.19 | 1.89 | 2.08 |
| 5. Telur dan susu / Eggs and milk | 3.17 | 2.89 | 3.06 |
| 6. Sayur-sayuran / Vegetables | 2.55 | 4.14 | 3.15 |
| 7. Kacang-kacangan / Legumes | 1.00 | 1.40 | 1.15 |
| 8. Buah-buahan / Fruits | 2.27 | 2.42 | 2.32 |
| 9. Minyak dan Kelapa / Oil and coconut | 1.16 | 2.10 | 1.51 |
| 10. Bahan minuman / Beverages stuffs | 1.30 | 2.35 | 1.70 |
| 11. Bumbu-bumbuan / Spices | 0.77 | 1.28 | 0.96 |
| 12. Konsumsi lainnya Miscellaneous food items | 0.90 | 1.26 | 1.04 |
| 13. Makanan dan minuman jadi Prepared food and beverages | 13.53 | 11.21 | 12.66 |
| 14. Rokok / Cigarettes | 4.79 | 7.85 | 5.94 |
| JUMLAH MAKANAN TOTAL OF FOOD | 42.55 | 55.63 | 47.47 |

CHART



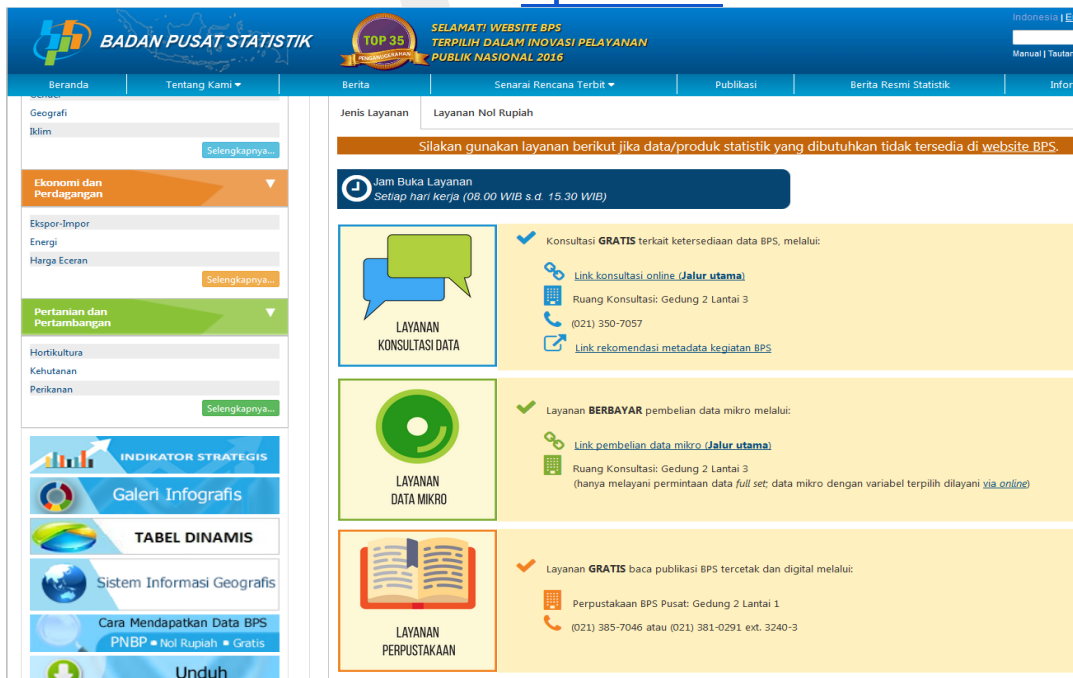
INFOGRAPHIC



WEBSITE DISSEMINATION

public-use micro-data sets, visit

<https://www.bps.go.id/menu/3/cara-mendapatkan-data-bps.html>



The screenshot shows the official website of Badan Pusat Statistik (BPS) of Indonesia. The header includes the BPS logo, the name 'BADAN PUSAT STATISTIK', and a 'TOP 35' award badge for 'SELAMATI WEBSITE BPS TERPILIH DALAM INOVASI PELAYANAN PUBLIK NASIONAL 2016'. The navigation bar contains links for Beranda, Tentang Kami, Berita, Senarai Rencana Terbit, Publikasi, Berita Resmi Statistik, and Informasi. A left sidebar lists various categories like Geografi, Iklim, Ekonomi dan Perdagangan, and Pertanian dan Pertambangan. The main content area is titled 'Jenis Layanan' and 'Layanan Nol Rupiah', featuring a notice about service hours and a list of services: 'LAYANAN KONSULTASI DATA' (free), 'LAYANAN DATA MIKRO' (paid), and 'LAYANAN PERPUSTAKAAN' (free).



This infographic details the 'LAYANAN NOL RUPIAH' (Zero Rupiah Service) provided by BPS. It features a large graphic of 'Rp 0,00' and a banner stating that services are provided free of charge based on Regulation No. 1 of 2012. Below this, it lists the 'Penerima Layanan Nol Rupiah' (Zero Rupiah Service Recipients): Instansi Pemerintah Pusat dan Daerah, Lembaga Negara, Lembaga Internasional, and Perwakilan Negeri Asing. On the right, it lists the 'Jenis Layanan Nol Rupiah' (Zero Rupiah Service Types): Publikasi tercetak sebanyak satu eksemplar, Publikasi elektronik sebanyak satu keping, Data mikro hingga 5 MegaByte, and Peta digital wilayah sebanyak satu peta.

Handbooks

are published twice a year, can be found at BPS's library



Executive Summary of
Consumption Expenditure



Title

1. Consumption Expenditure
2. Consumption Calorie and Protein
3. Consumption Expenditure by Province

WEBSITE

DISSEMINATION

Visit our website at <https://www.bps.go.id/>

you can download consumption and expenditure presented in ebooks as **pdf file** at

<https://www.bps.go.id/publication.html?Publikasi%5BtahunJudul%5D=&Publikasi%5BkataKunci%5D=consumption&yt0=Show>

or

<https://www.bps.go.id/publication.html?Publikasi%5BtahunJudul%5D=&Publikasi%5BkataKunci%5D=consumption&yt0=Show>

to view the **concept** and **methodology** of the indicators, and to present the data in the interactive **table**.



WEBPAGE

**STATISTICS INDONESIA**

**SELAMAT! WEBSITE BPS
TERPILIH DALAM INOVASI PELAYANAN
PUBLIK NASIONAL 2016**

Indonesia | English

Search

Manual | Links | Sitemap | ToU

Home | About | News | Advanced Release Calendar | Publication | Press Release | Public Information

Home » Publication

CENSUS RESULT

Social and Population

Climate

Consumption and Expenditure

Education

Selengkapnya...

Economic and Trade

Business & Consumer Tendency Index

Communication

Construction

Selengkapnya...

Agriculture and Mining

Animal Husbandry

Fishery

Food Crops

Selengkapnya...

STRATEGIC INDICATORS

Infographic Gallery

DYNAMIC TABLE

PUBLICATION

Year : -- Choose Year --

Keyword : consumption

Show

Showing 1-10 of 366 results



Expenditure for Consumption of Indonesia by Province March 2017

Catalog Number : 3201005
Publication Number : 04210.1715
ISSN / ISBN : 1979-9942
Released Date : 2017-12-28
Ukuran File : 12.65 MB

DOWNLOAD PUBLICATION

Publication of Indonesian Population Consumption Expenditures by province is the third book of the four books in the series of publications on the expenditure and consumption of household. This publication presented data Susenas for the March 2017, which provide an overview of monthly expenditure and consumption per capita at the provincial level.



Consumption of Calorie and Protein of Indonesia and Province March 2017

Catalog Number : 3202001
Publication Number : 04210.1717
ISSN / ISBN : 1979-6250
Released Date : 2017-12-28
Ukuran File : 10.27 MB

DOWNLOAD PUBLICATION

In this book publicized data on consumption/expenditure of population from the results of the March 2017 Susenas (VSEN2017.KP), aimed to evaluate the living standards of Indonesian's population in terms of nutritional adequacy, especially the adequacy of calories and protein consumption. For Susenas data can be used to assess the nutritional adequacy and adequacy of caloric and protein consumption, Susenas data are needed for planning national and global development programs such as Sustainable Development Goals (SDGs) 2016-2030 where the second target is to eliminate hunger and all form of malnutrition in 2030 (SDGs).



WEBPAGE

**STATISTICS INDONESIA**

**SELAMATI WEBSITE BPS
TERPILIH DALAM INOVASI PELAYANAN
PUBLIK NASIONAL 2016**

Indonesia | English

Manual | Links | Sitemap | TSIU


Home | About | News | Advanced Release Calendar | Publication | Press Release | Public Information

Home » Consumption and Expenditure

Social and Population
Climate
Consumption and Expenditure
Education
[Selengkapnya...](#)


Economic and Trade
Business & Consumer Tendency Index
Communication
Construction
[Selengkapnya...](#)

Agriculture and Mining
Animal Husbandry
Fishery
Food Crops
[Selengkapnya...](#)

**STRATEGIC INDICATORS**

**Infographic Gallery**

**DYNAMIC TABLE**

**Geographic Information System**

Concept | Methodology | **Statistik Dasar** | Statistik Sektoral | Custom Made Tabel

Menampilkan 27 Judul Tabel

Cari :

| No | Judul Tabel | Update Terakhir |
|----|--|-----------------|
| 1 | Distribution of Expenditure per Capita and Gini Index, 2010-2016 | 01 Nov 2017 |
| 2 | Total Income by Household Group (billion rupiahs), 2000, 2005, and 2008 | 09 Sep 2014 |
| 3 | Minimum Living Needs in a Month (Rupiah) By Province 2005-2015 | 30 Jun 2016 |
| 4 | Availability of per Capita Fats by Foodstuffs Commodity Group (grams), 1996-2016 | 24 Nov 2017 |
| 5 | Value of Disposable Income by Household groups (Billion rupiahs), 2000, 2005, and 2008 | 09 Sep 2014 |
| 6 | Value of Conduction Expenditure by Household Group (billion rupiahs), 2000, 2005, dan 2008 | 09 Sep 2014 |
| 7 | Percentage of Monthly Average per Capita Expenditure by Commodity Group, Indonesia, 1999, 2002-2016 | 01 Nov 2017 |
| 8 | Percentage of Expenditure Distribution Growth | 01 Nov 2017 |
| 9 | Percentage of Average Monthly Expenditure per Capita in Rural Areas by Province and Commodity Groups, 2007-2016 | 01 Nov 2017 |
| 10 | Percentage of Average Monthly Expenditure per Capita in Urban Areas by Province and Commodity Groups, 2007-2016 | 01 Nov 2017 |
| 11 | Average Daily Consumption of Calorie and Protein per Capita 1990 - 2016 | 11 Jan 2018 |
| 12 | Average of Perkapita Total Income by Household Group (Thousand rupiahs), 2000, 2005, and 2008 | 09 Sep 2014 |
| 13 | Average Daily Consumption of Calorie and Protein per Capita by Province, 2007-2016 | 01 Nov 2017 |
| 14 | Average Weekly Consumption of Several Food Items Per Capita, 2007-2016 | 01 Nov 2017 |
| 15 | Average of Per Capita Disposable Income by Household Groups (thousand rupiahs), 2000, 2005, and 2008 | 09 Sep 2014 |
| 16 | Average of Per capita Consumption Expenditure by Household Group (Thousand Rupiahs), 2000, 2005, and 2008 | 09 Sep 2014 |
| 17 | Average Monthly Expenditure per Capita in Rural Areas by Commodity Group and Monthly Expenditure per Capita Class, 2000-2012 | 08 Sep 2014 |
| 18 | Average Monthly Expenditure per Capita in Rural Areas by Commodity Group and Monthly Expenditure per Capita Class, 2013-2016 | 01 Nov 2017 |

A decorative graphic consisting of a large, light blue dashed circle that frames the central text. Various smaller circles in different colors (teal, yellow, green, orange, pink) are scattered around the perimeter of the dashed circle, some solid and some hollow.

coNTINue...