

A decorative graphic featuring a large, light blue dashed circle that frames the central text. Various solid-colored circles in shades of teal, green, yellow, orange, and pink are scattered around the perimeter. Some circles are solid, while others are dashed outlines. The overall style is modern and clean.

PROCESSING SUSENAS DATA

- Since 2011, susenas data processing activities have been conducted jointly between the Directorate of Statistics Welfare and the Directorate of Statistical Information System (SIS).
- In general, the processing is divided into two parts, namely: “pra-computer” stage and data entry stage.



RECEIVING BATCHING

- ❑ The receiving batching stage is a very important first step in the process of recording data.
- ❑ This activity is useful to check the completeness of field enumeration documents and grouping documents based on the receipt of documents
- ❑ Broadly the work was undertaken by the receiving batching officer as follows:
 1. Checking document identity according to Sample List of Census Block.
 2. Checking the number of questionnaires in 1 Sample Code Number of 10 HH and must be in accordance with the List of Household Samples.
 3. Check the number of questionnaires in each Sample Code Number which is consists of 10 HH and must comply with List of HH Samples.

- ❑ Batching is done by grouping questionnaires based on Sample Code Number with an amount of 1-3 Sample Code Number per batch.

LEMBAR <i>BATCH</i>		
NO BATCH / TANGGAL		
PROVINSI		
KABUPATEN		
NO NKS	JUMLAH RUTA	Nama Editor:
		Tgl Pengeditan: Mulai: Selesai:
		Nama Pengentri:
TOTAL		Tgl Pengentrian: Mulai: Selesai:
KETERANGAN :		



Sample List of Census Block

Pelopor
Data Statistik
Terpercaya
Untuk Semua



BADAN PUSAT STATISTIK

INTEGRASI SURVEI SOSIAL EKONOMI NASIONAL DAN RISET KESEHATAN DASAR 2018 DAFTAR SAMPEL BLOK SENSUS

VSEN18.DSBS

PROVINSI : [32] JAWA BARAT

KABUPATEN / KOTA : [75] BEKASI

KECAMATAN DESA / NAGARI / KELURAHAN	K/P	Nomor Blok Sensus	N K S	Jumlah Ruta Biasa (SP2010-C1)	Biomedis	Keterangan Sumber Daftar Ruta
(1)	(2)	(3)	(4)	(5)	(6)	(7)
[010] PONDOKGEDE						
[008] JATIMAKMUR	1	031B	25031	89		SSN17_1
		043B	15042	194		SP2010-C1
		134B	25133	72	V	SP2010-C1
[009] JATIWARINGIN	1	026B	25162	57	V	SAK17
		071B	25207	128	V	SP2010-C1
[010] JATIBENING	1	054B	25296	157	V	SP2010-C1
[011] JATICEMPAKA	1	017B	25373	161		SSN16_1
		076B	25431	150	V	SSN17_1
		079B	15434	167		SP2010-C1
[012] JATIBENING BARU	1	052B	25561	79	V	SSN17_1
		095B	25604	168	V	SP2010-C1
		100B	15609	77		SP2010-C1
[011] JATISAMPURNA						
[002] JATISAMPURNA	1	058B	25735	62	V	SAK15
[003] JATIRANGGA	1	024B	15831	174		SUPAS15
[006] JATIRADEN	1	040B	25974	101		SSN16_1
[012] PONDOKMELATI						
[001] JATIMURNI	1	019B	26029	61	V	SAK17
		047B	26057	118	V	SP2010-C1
[004] JATIRAHAYU	1	019B	26222	72	V	SUPAS15
		023B	26226	81	V	SSN16_1



List of Household Samples

Pelopor
Data Statistik
Terpercaya
Untuk Semua

(1)



SURVEI SOSIAL EKONOMI NASIONAL (SUSENAS) RISET KESEHATAN DASAR (RISKESDAS) 2018 DAFTAR SAMPEL RUMAH TANGGA

Pelaksanaan

MARET

RAHASIA

BLOK I. KETERANGAN TEMPAT			BLOK IV. CATATAN				
1. Provinsi	JAWA BARAT		3	2			
2. Kabupaten/Kota *)	BEKASI		7	5			
3. Kecamatan	BANTARGEBAK		0	3	0		
4. Desa/Kelurahan *)	BANTARGEBAK		0	0	4		
5. Klasifikasi Desa/Kelurahan	Perkotaan (-1) Perdesaan -2			1			
6. Nomor Blok Sensus			1	1	3	B	
7. Nomor Kode Sampel (NKS **)			1	7	2	7	8
BLOK II. REKAPITULASI RUMAH TANGGA							
Banyaknya Rumah Tangga Hasil Pemutakhiran			0	5	8		
BLOK III. KETERANGAN PENCACAHAN							
URAIAN	PENCACAH	PENGAWAS					
1. Nama Petugas	ALI	SOFYAN					
2. Tanggal							
3. Tanda Tangan							

*) Coret yang tidak sesuai

**) NKS Digit-1 kode 1 dicacah Maret dan September
kode 2 dicacah Maret



List of Household Samples

Pelopor
Data Statistik
Terpercaya
Untuk Semua

(2)

Identitas Blok Sensus : 3275030004 113B

BLOK V. KETERANGAN RUMAH TANGGA TERPILIH											
No. Urut					Nama Kepala Rumah Tangga	Alamat	Pendidikan tertinggi yang dita- matkan KRT 1 = < SMP 2 = SMP 3 = SMA 4 = PT	Jumlah ART Hasil Pemu- tahiran	Apakah Ada Balita atau Ibu Hamil 1-Ya 2-Tidak	Status Pencacahan 1=Terisi Lengkap 2=Terisi Tdk Lengkap 3=Tidak ada ART/ responden yang dapat memberi jawaban 4=Responden Menolak 5=Ruta pindah /bangunan sensus sudah tidak ada	Jumlah ART Hasil Pencacahan
Sam- pel	SLS	Bangunan		Ruta							
(1)	(2)	(3)	(4)	(5)	(6)	(7)	(8)	(9)	(10)	(11)	(12)
1	002	001	001	001	MUHAMAD BOANG	JL YAYASAN NURUL HUDA RT 002 RW 01	3	7	1		
2	002	006	010	008	LUKMAN	JL YAYASAN NURUL HUDA RT002 RW01	2	1	2		
3	002	006	012	010	AJRIL	JL YAYASAN NURUL HUDA RT002 RW01	3	1	2		
4	002	011	020	018	AHMAD	JL YAYASAN NURUL HUDA RT002 RW01	3	3	1		
5	002	012	021	019	SANUDIN	JL YAYASAN NURUL HUDA RT002 RW01	2	4	2		
6	002	013	023	021	ACE	JL AMD RT002 RW01	1	3	2		
7	002	013	025	023	SUGIARTO	JL AMD RT002 RW01	2	3	2		
8	002	021	041	033	SODIKIN	JL YAYASAN NURUL HUDA RT002 RW01	3	4	2		
9	002	024A	045A	058	ASHARI	JL. YAYASAN	3	5	2		
10	002	033A	055A	059	BUSARI	JL. YAYASAN	3	3	1		

EDITING CODING

Editing means correcting the collected data

- Checking the enumeration questionnaire
- Check the reasonableness of the question field
- Checking consistency between questions
- Fill with code in the box provided
- Fixed the wrong field
- Submit completed document in editing coding to integration of processing and statistical dissemination (IPDS) section

ENTRY DATA



- SUSENAS data entry is carried out at BPS district by using a network system already available at there.
- The application program for data entry and validation was developed with Microsoft Visual Studio 2012 software with C# programming language and Microsoft SQL Server 2008 R2 database
- Requirement of data entry operator :
Must follow interviewer training
Must be familiar with the questionnaires

COMPILATION AND VALIDATE DATA

- Implemented in the province
- Merging data entries from each district
- Revalidate data entry
- SPSS syntax is provided for data revalidation in the BPS Province

BASIC TABULATION

- Create a Basic table in the form of frequency tables and simple crosstab tables.
- Used to view the feasibility of data revalidation results

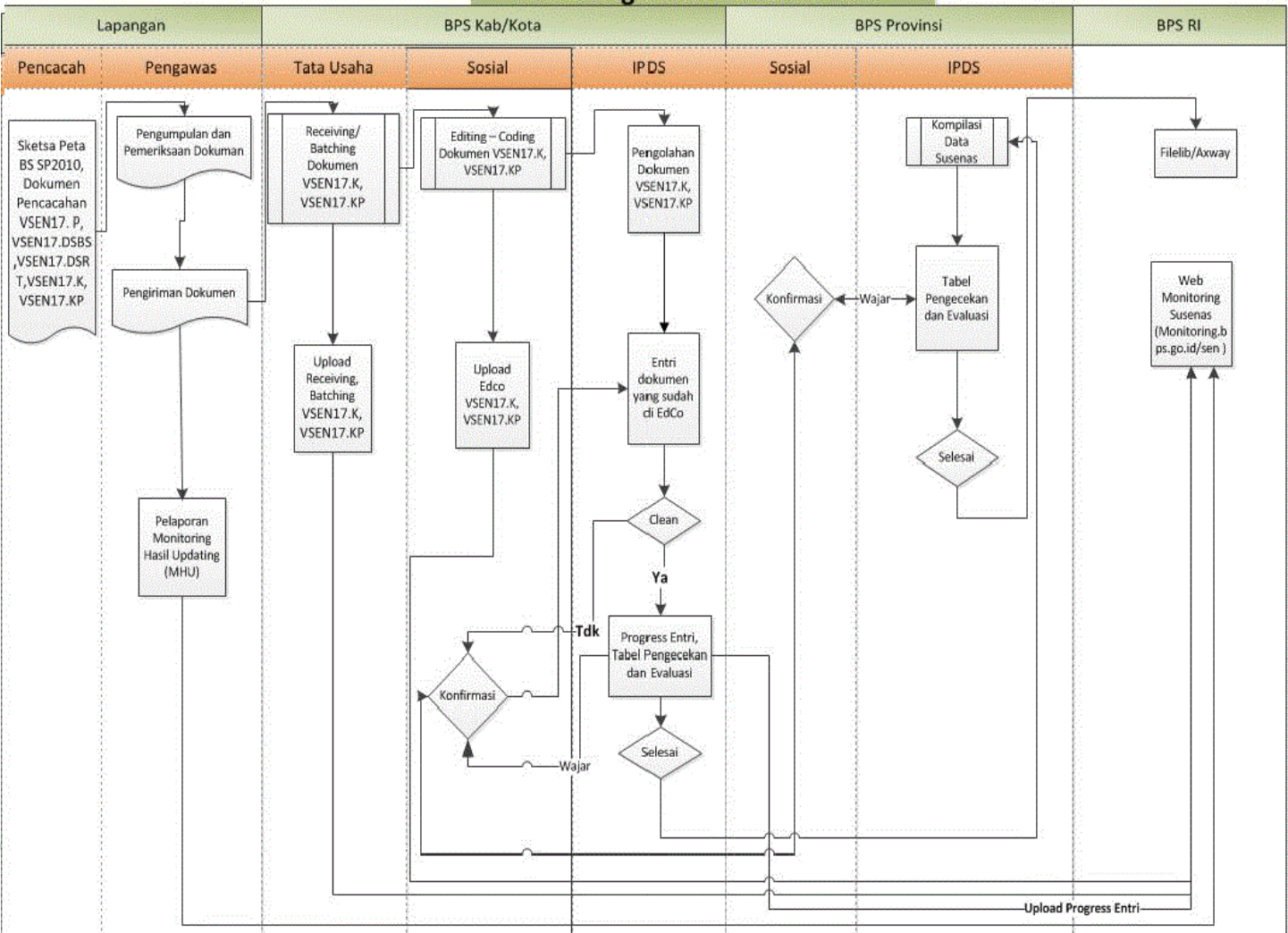
EXPLORING DATA

- Observations of the data collected by using certain statistical tools
- Statistical tools can be in the form of data trends, crosstab, boxplot, etc.
- Using the SPSS

MEASURE ACCURACY OF INDICATORS

- Using the SPSS Calculate the Relative of Standard Error (RSE) for each of indicator
- Using STATA version 14.0
- The elements are calculated: point estimate, Standard error, CI 95%, Design effect and Number of Observation

Alur Pengolahan Susenas 2017





End