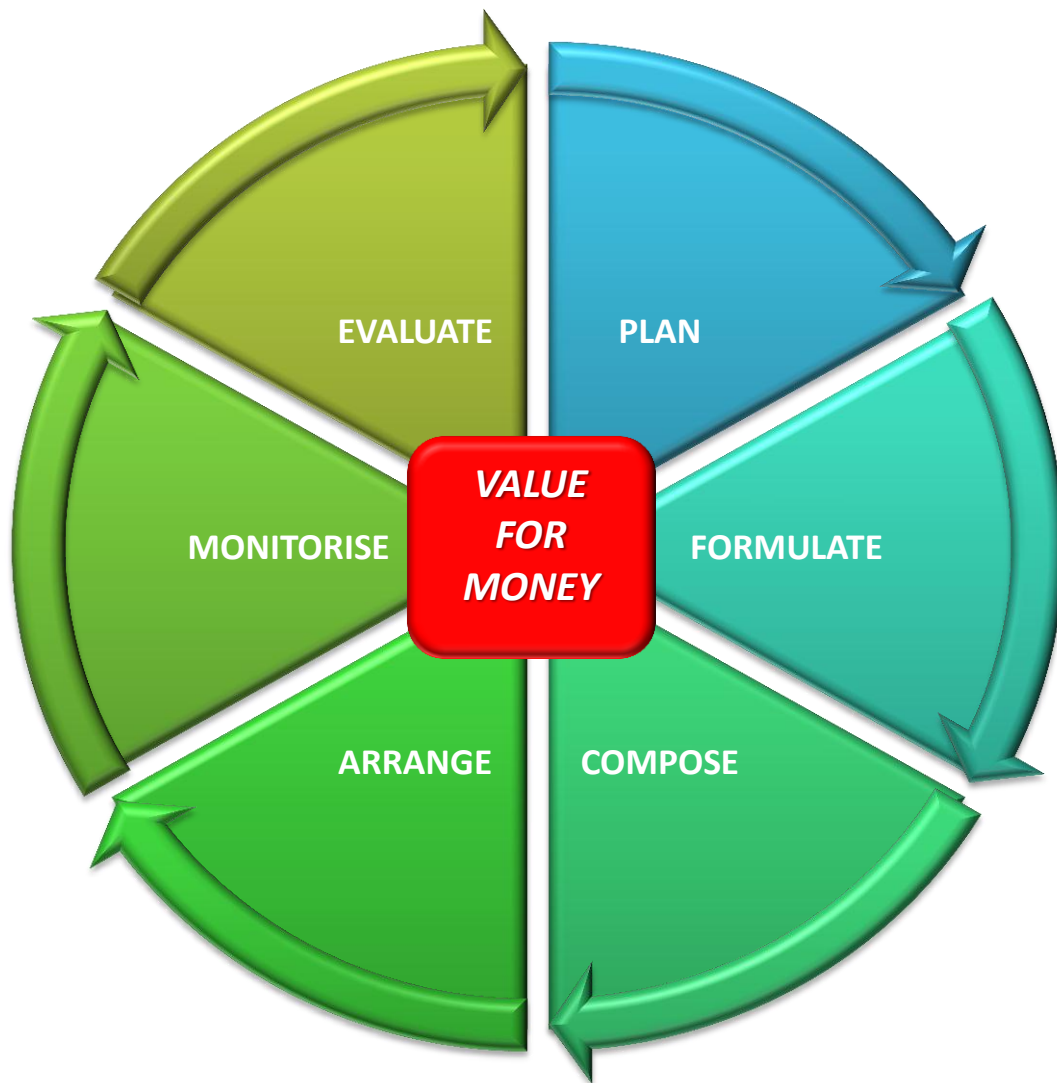




BUREAU OF PROGRAMS MANAGEMENT

Pelopor
Data Statistik
Terpercaya
Untuk Semua



THE FOCUS



**1. Performance Based
Budgeting**



2. Unified Budget

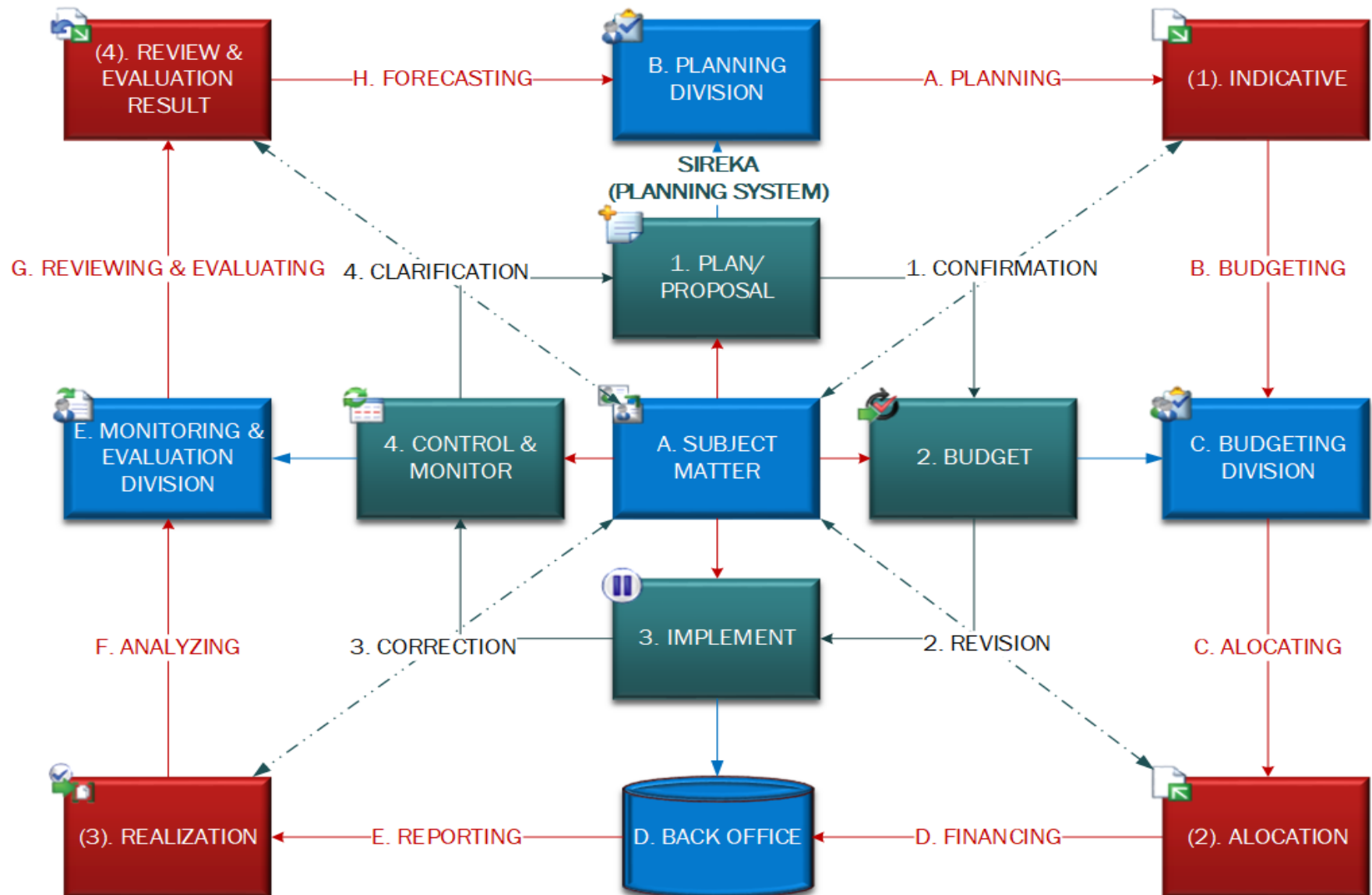


**3. Medium Term
Expenditure Framework**



BUREAU OF PROGRAMS MANAGEMENT ROLE

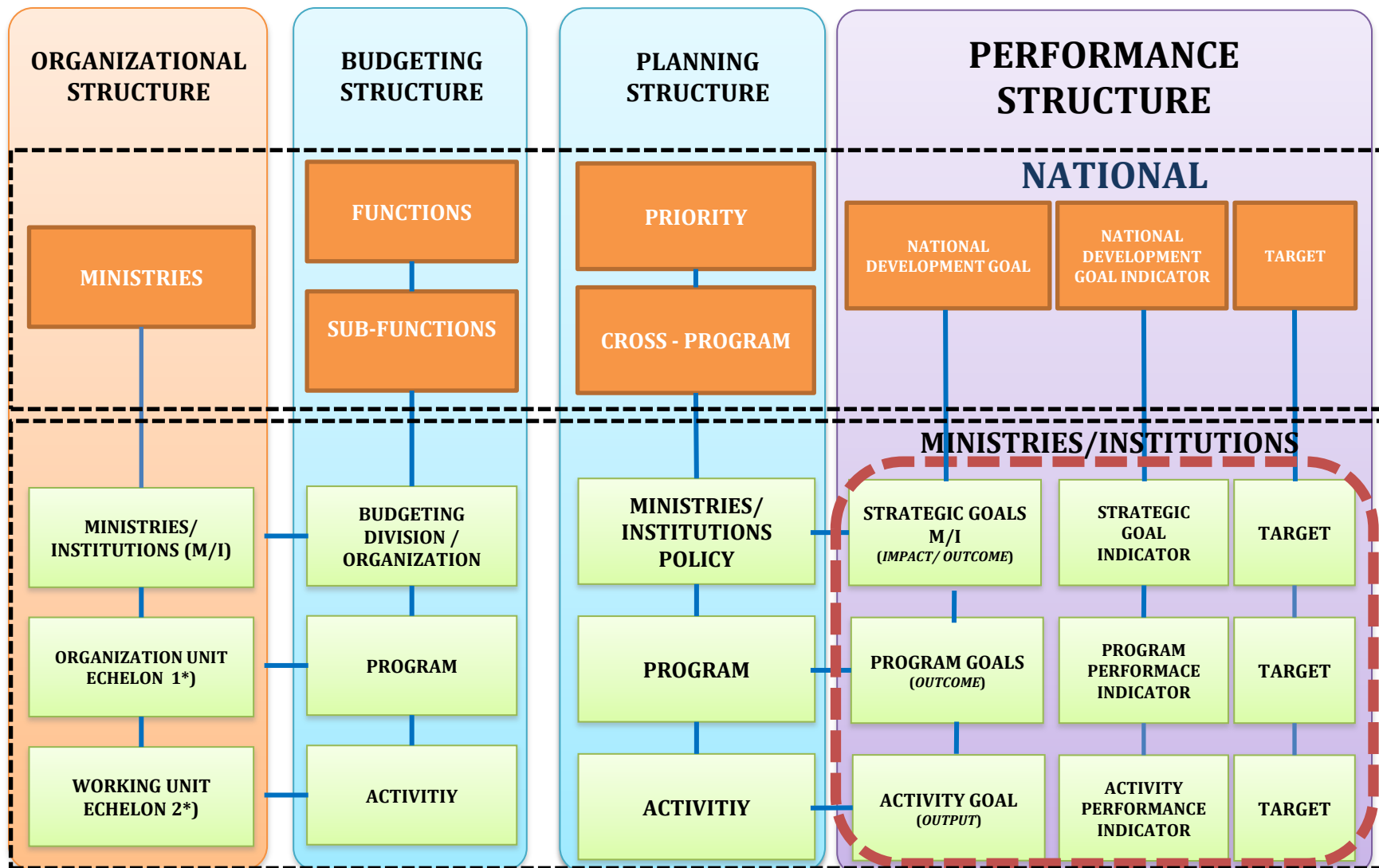
Pelopop
Data Statistik
Terpercaya
Untuk Semua





ARCHITECTURE CHANGE : PROGRAM, ACTIVITY, AND PERFORMANCE

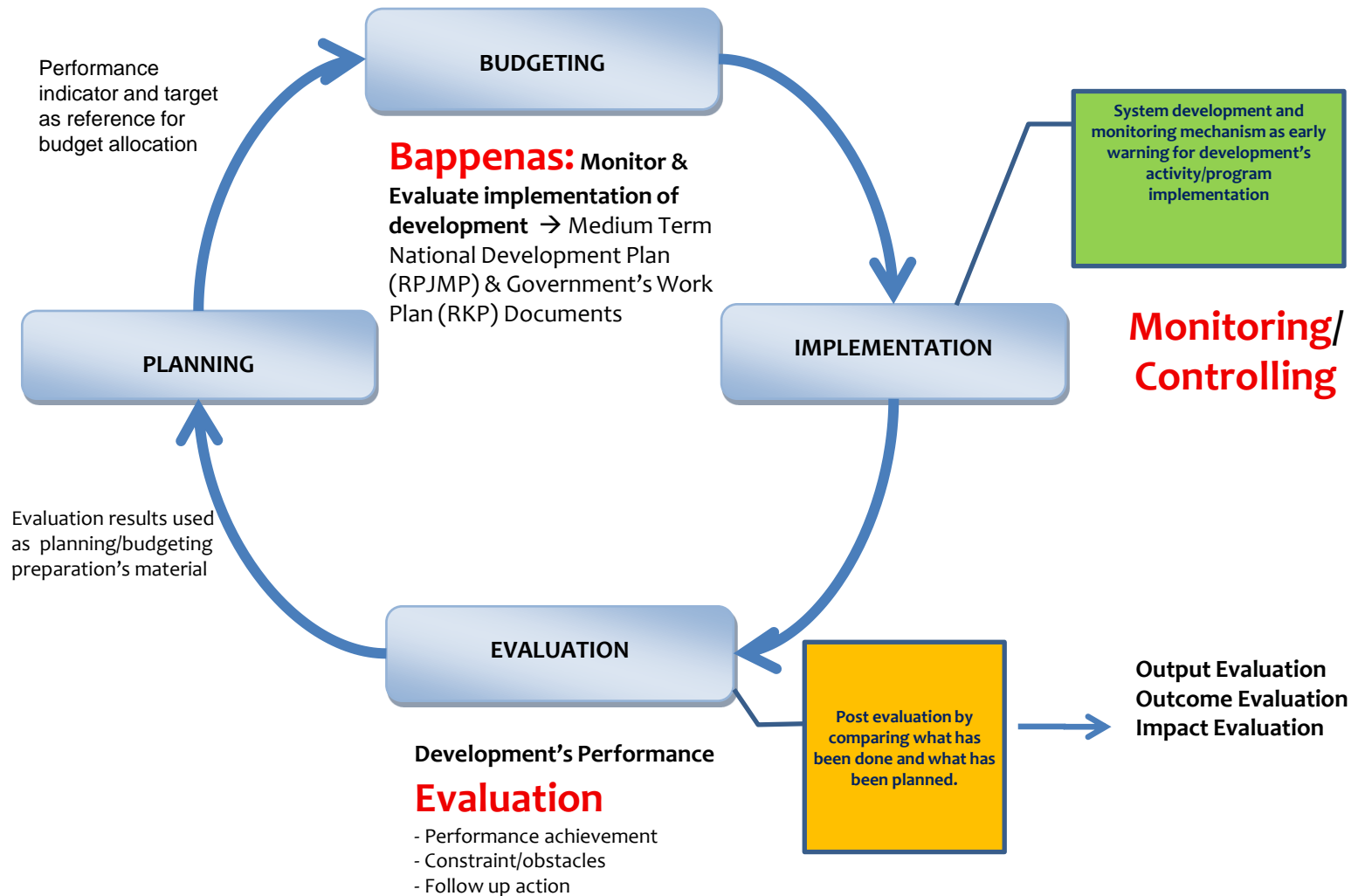
Pelopor
Data Statistik
Terpercaya
Untuk Semua



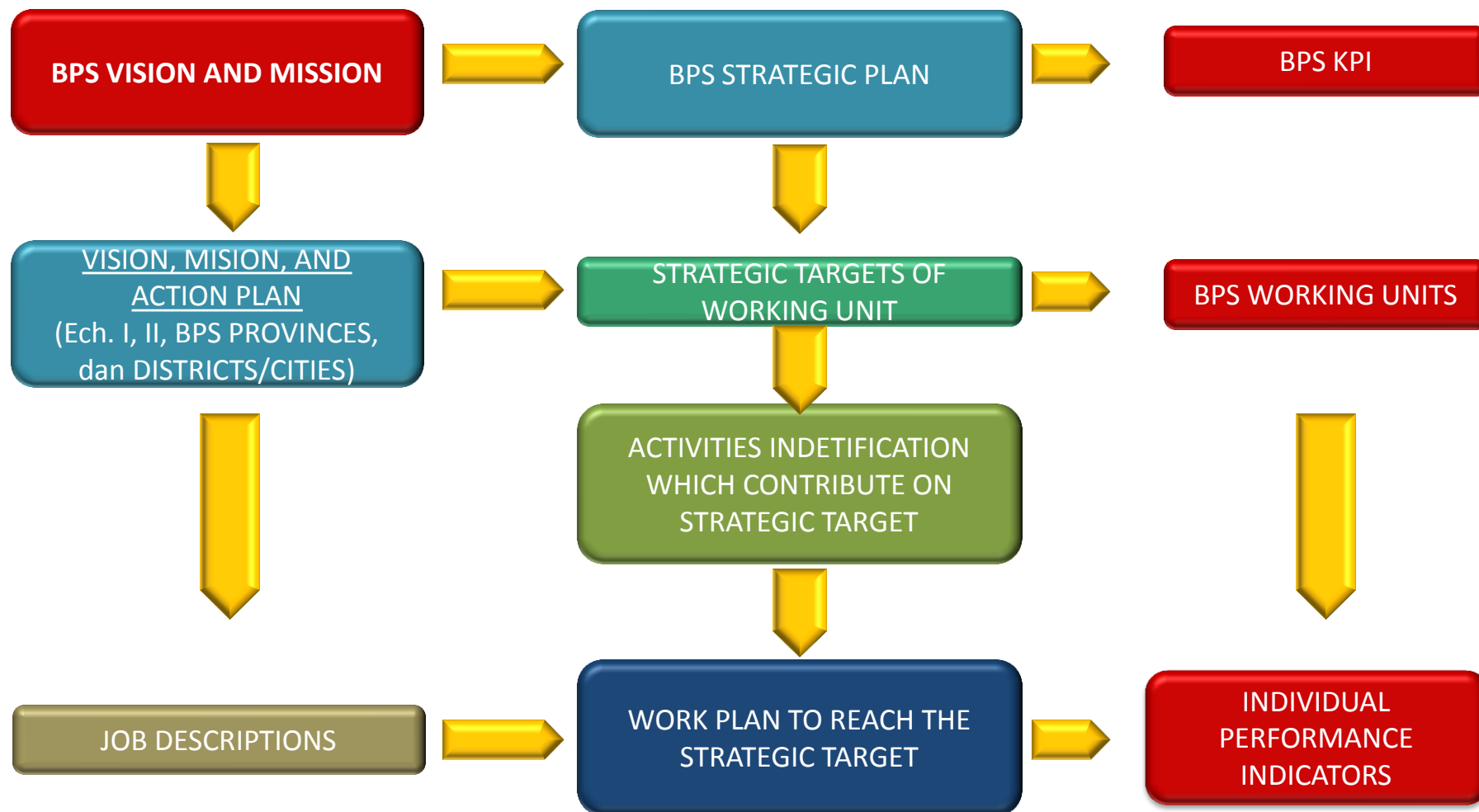


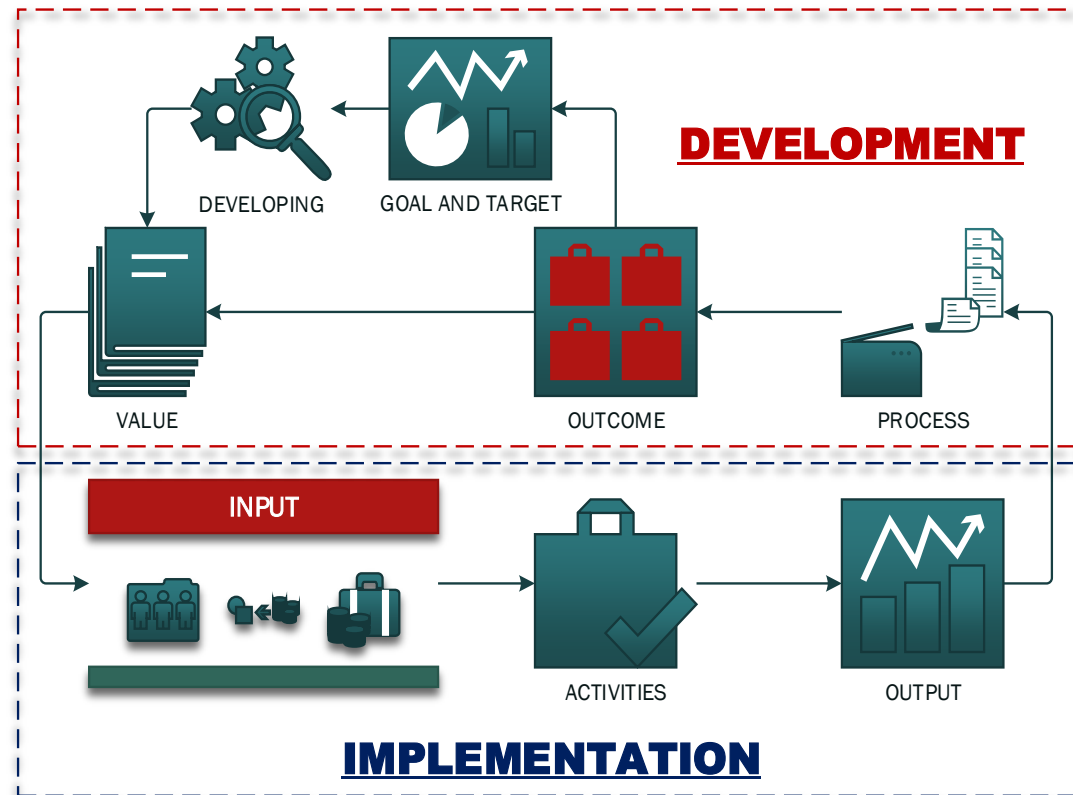
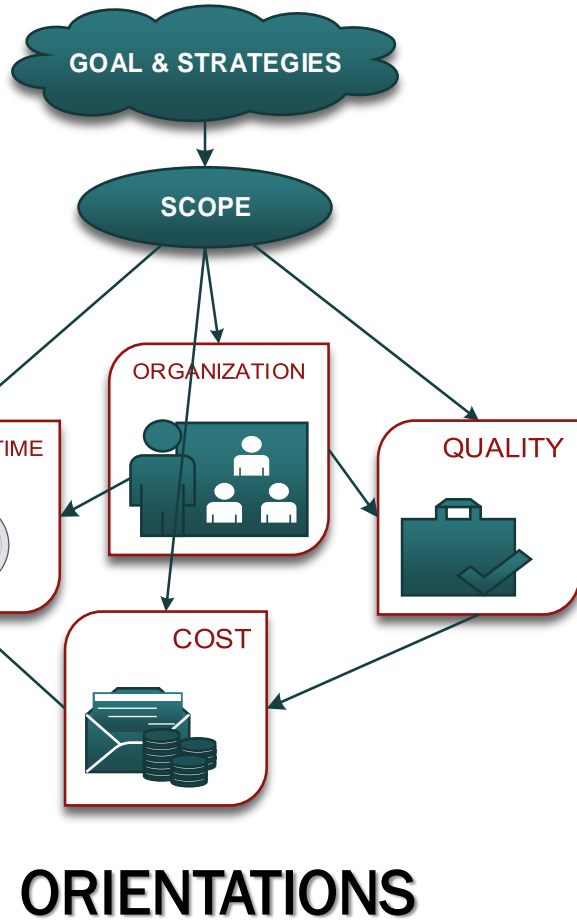
PLANNING CYCLE

Pelopor
Data Statistik
Terpercaya
Untuk Semua



STRATEGIC PLAN BUILD INDIVIDUAL PERFORMANCE INDICATORS



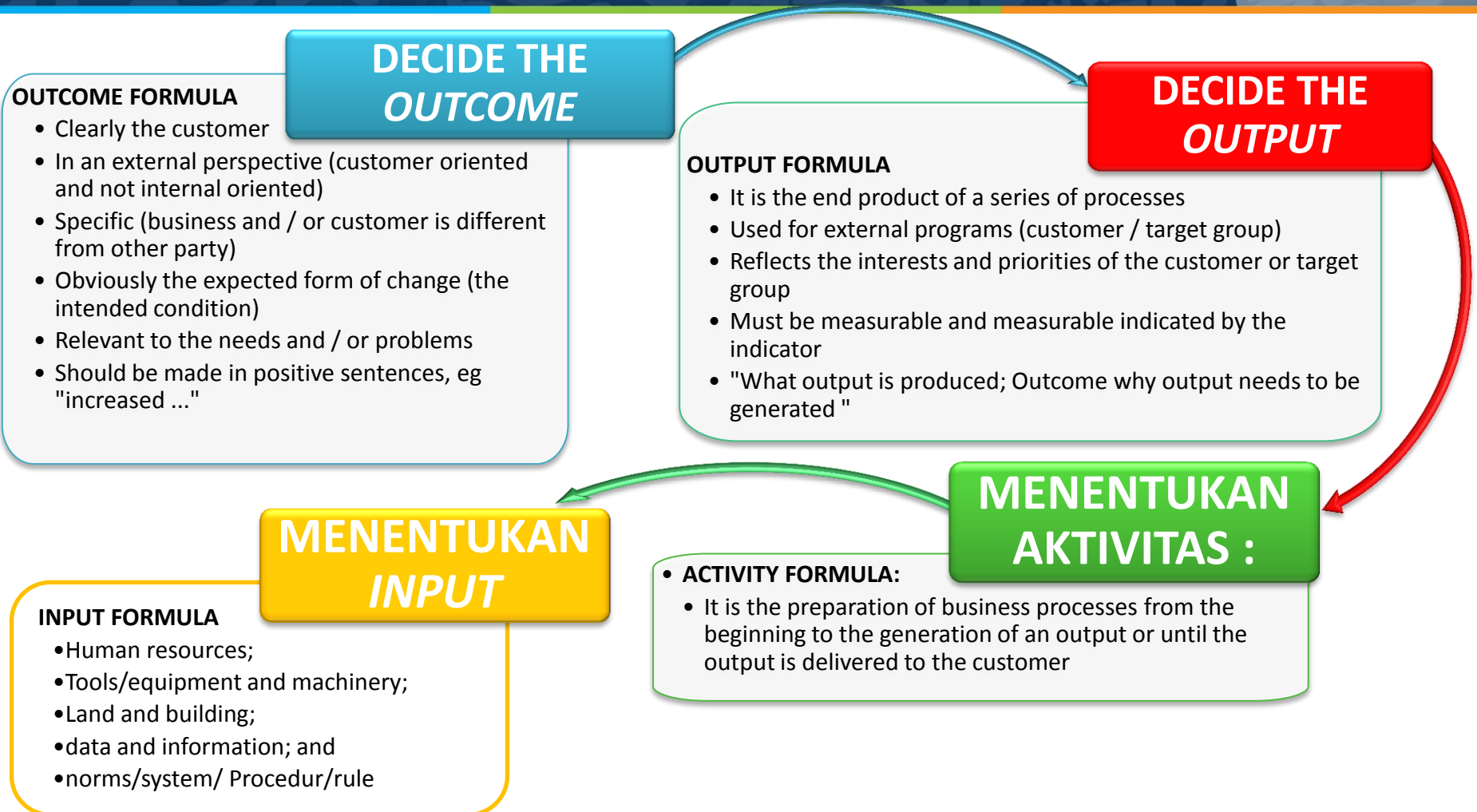




- ❑ Logical framework approach is used in formulating development goals.
- ❑ Logical framework is a thinking framework which explain the relations among input, process, goals/product and output.



- ❑ Logical framework may be used in formulating every level of goals (K/L, Program, and Activities).
 - Prerequisites : With assumption stand on the same position.





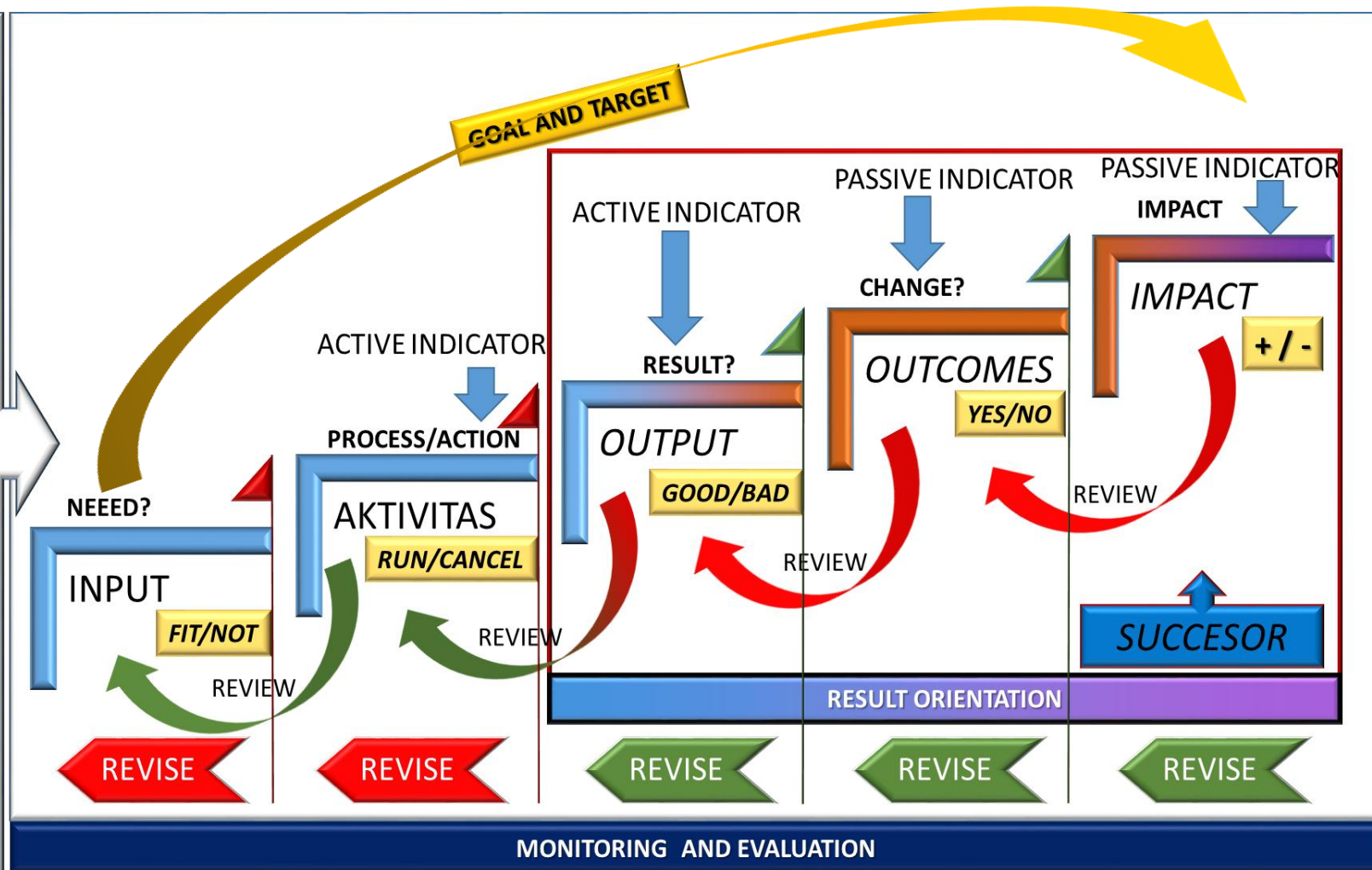
Logic Model Concept :

Pelopor
Data Statistik
Terpercaya
Untuk Semua

Bureau of Program Management mobilizes BPS activities where all required inputs should produce a useful output and create meaningful outcomes for BPS in particular and for the country.

PROJECT/ TASK

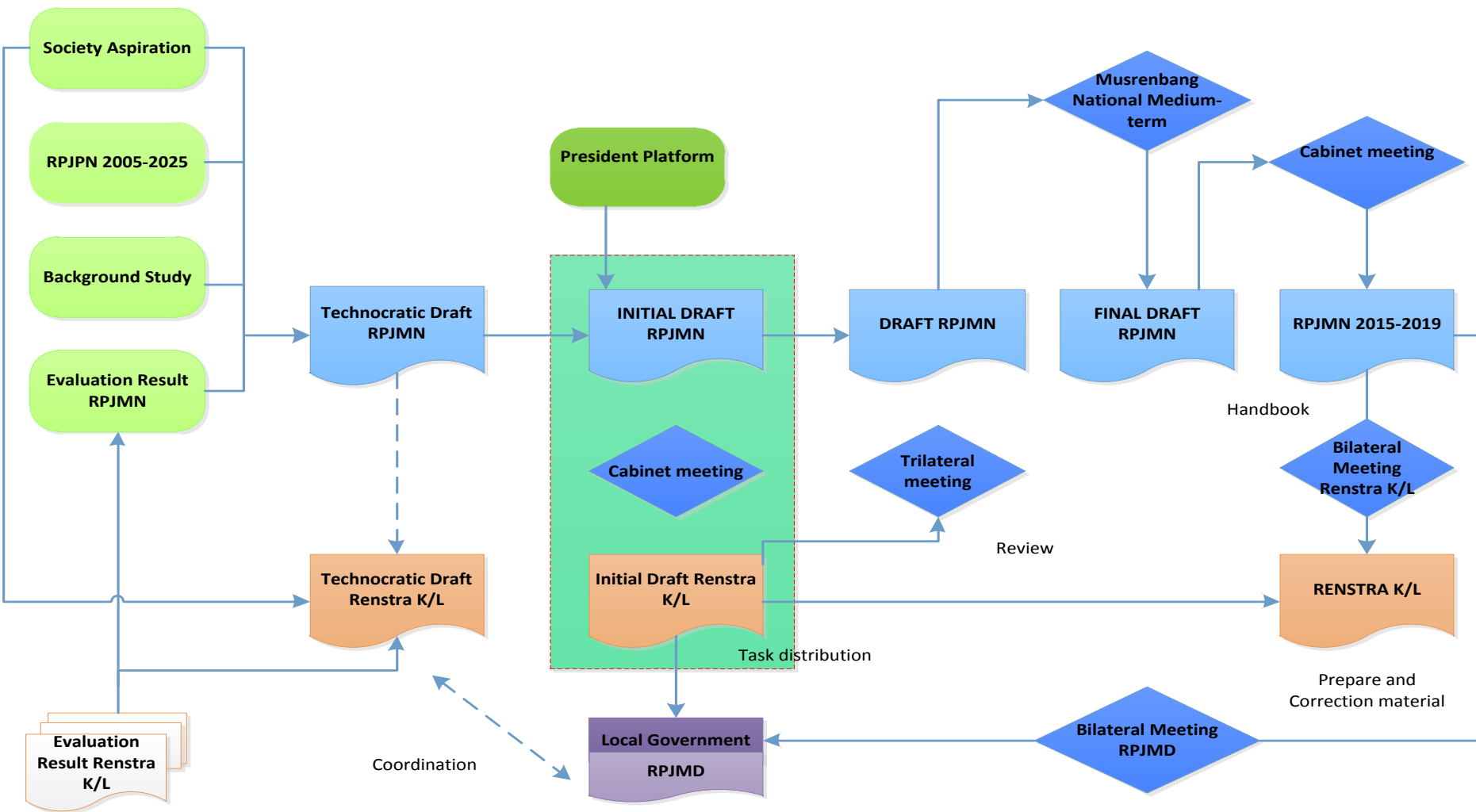
- DESIRE
- DEMANDS
- TASK
- ASSUMPTION
- THOUGHT
- OFFER, etc.





Preparation Process of the RPJMN 2015-2019

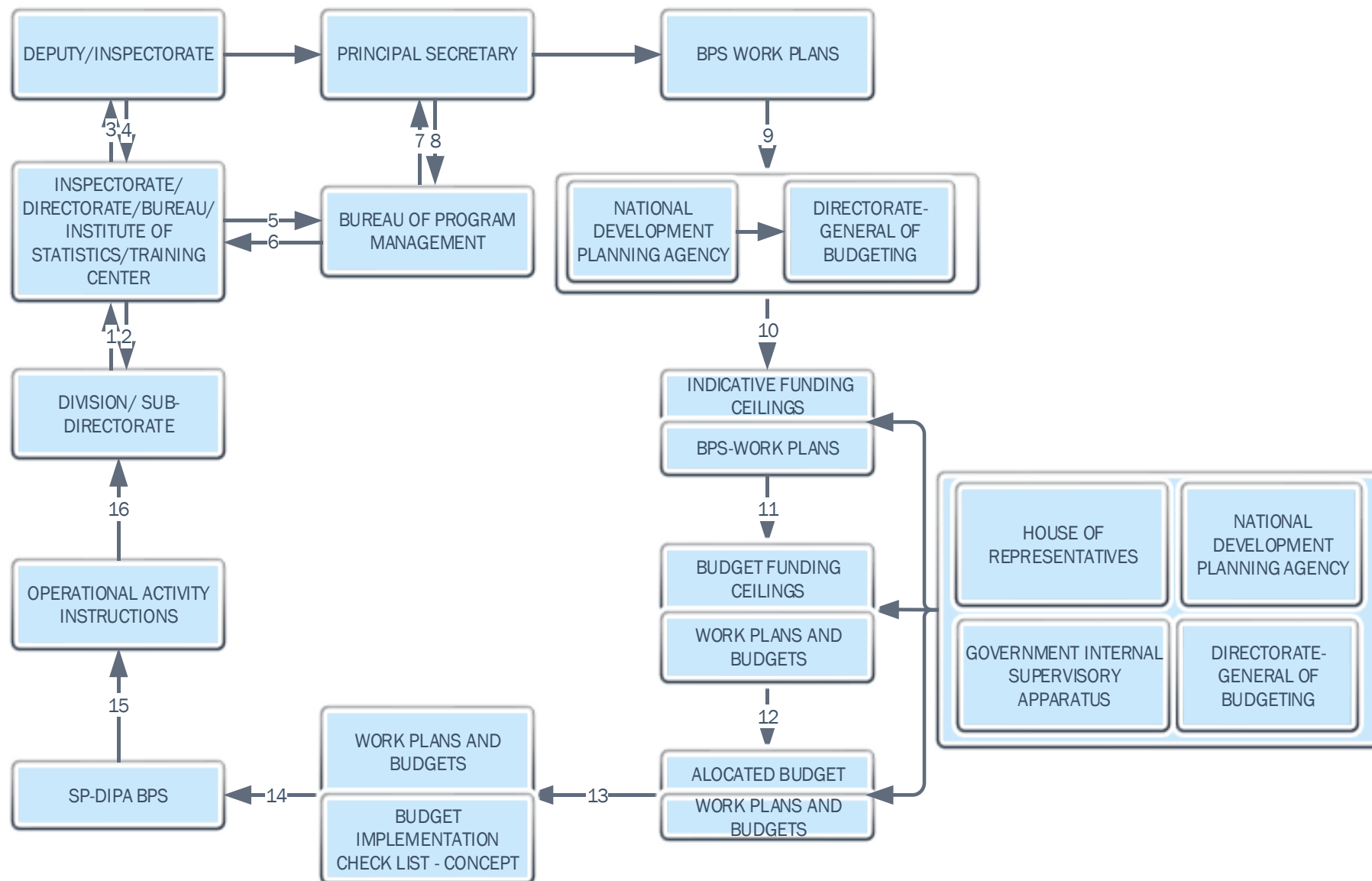
Pelopop
Data Statistik
Terpercaya
Untuk Semua





The National Development Planning System

Pelopop
Data Statistik
Terpercaya
Untuk Semua



[illegible]