



State of Palestine

International Trade in Goods Statistics

April, 6th. 2021



Contents



General Overview



Data Sources



Manuals and Classifications



Data collection & Processing



Data quality Procedures



Indicators



Publication & Dissemination



General Overview



Trade in goods
statistics Since 1996.



Trade in Services with
Israel since 2000

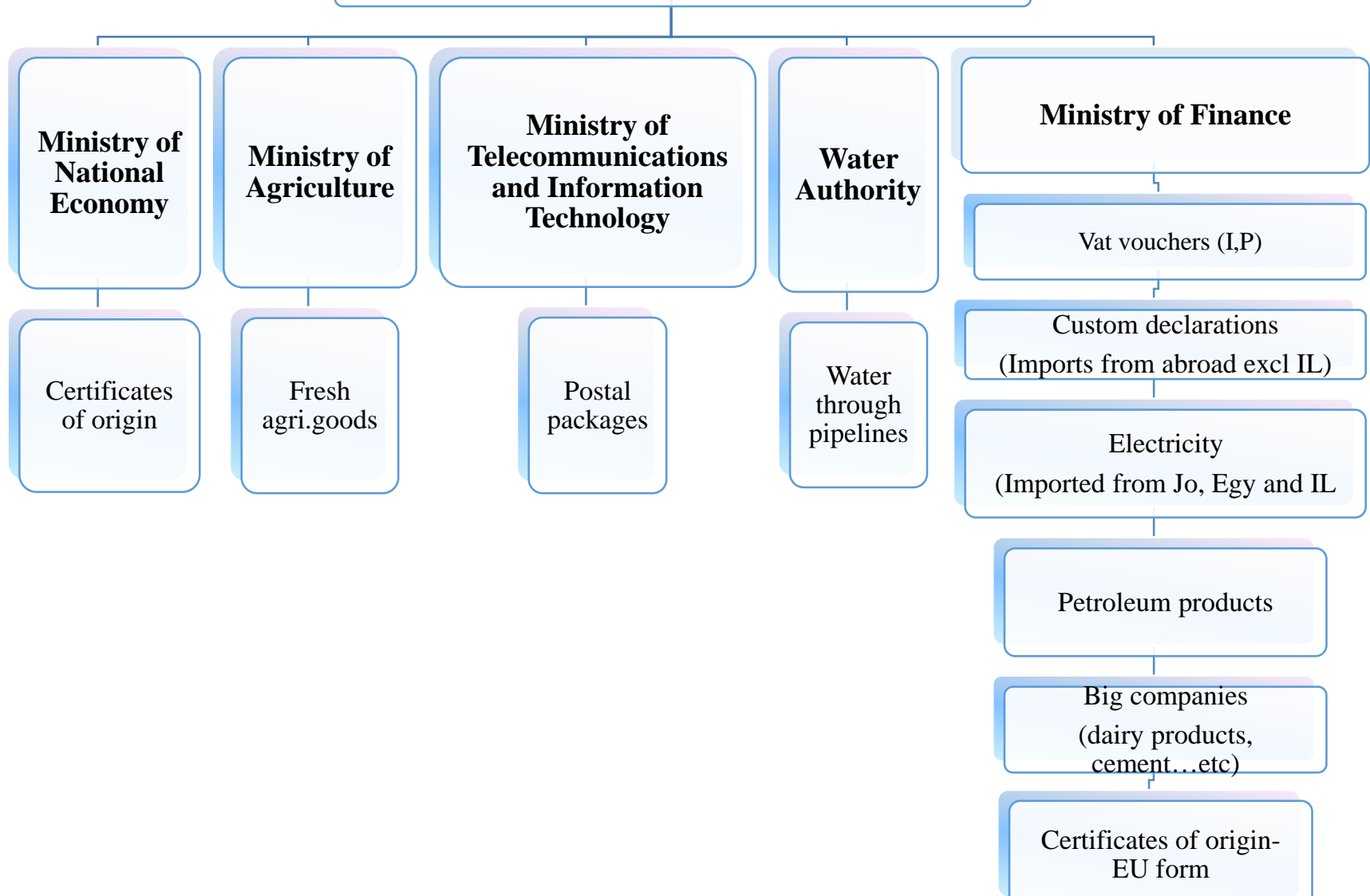


Using Web applications
and hand held devices



Mirror exercises

Data Sources



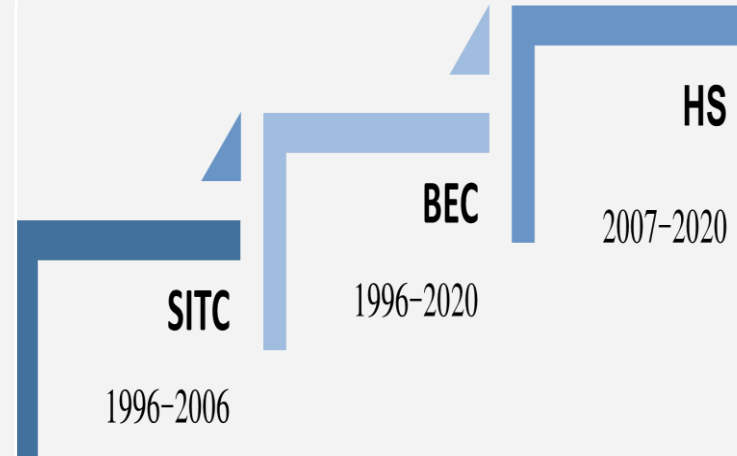
Manuals & Classifications

International Merchandise
Trade Statistics
Concepts and Definitions 2010

Social Affairs

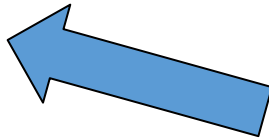


IMTS

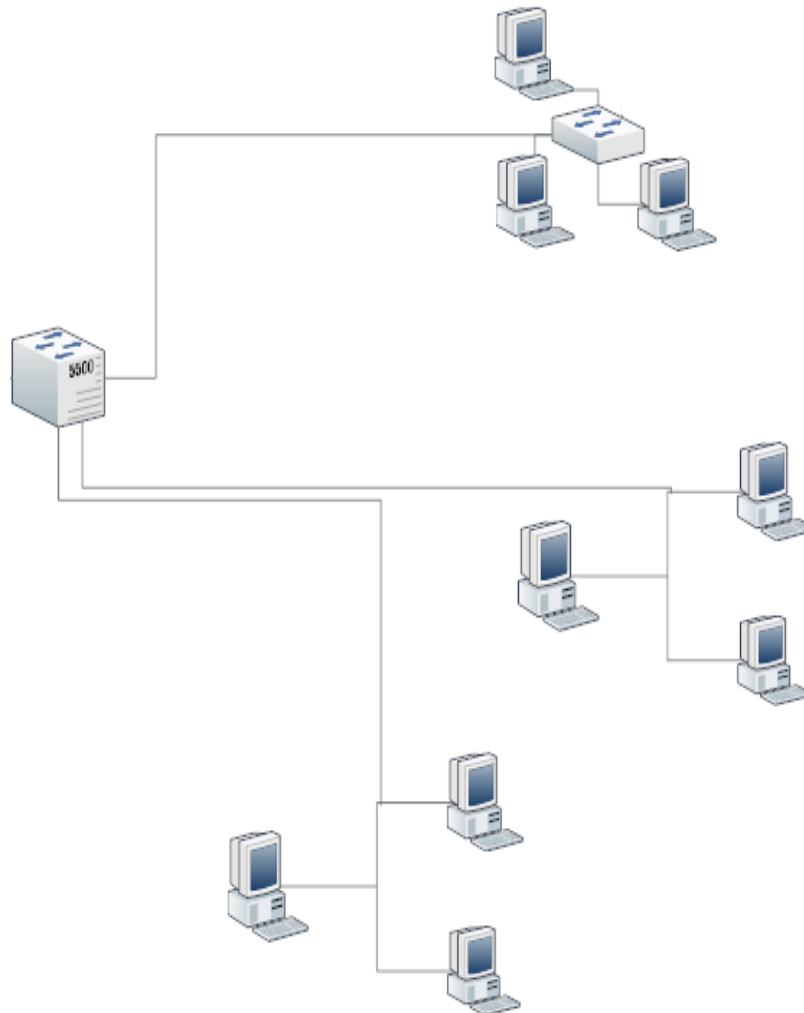


Different Classifications

Data collection & Processing



Prod2013					
Value	HS_6D	Main_Group	CH_Chapter	Prod_Code	Di
39479	020220	0202	02	02022000	40
14561	020220	0202	02	02022000	40
3552	020220	0202	02	02022000	40
12479	020220	0202	02	02022000	40
13910	020220	0202	02	02022000	40
22233	020220	0202	02	02022000	40
9261	020220	0202	02	02022000	40
27976	020220	0202	02	02022000	40
16636	020220	0202	02	02022000	40
5869	020220	0202	02	02022000	40
7688	020220	0202	02	02022000	40
5869	020220	0202	02	02022000	40
11087	020220	0202	02	02022000	40
7693	020220	0202	02	02022000	40
10685	020220	0202	02	02022000	40
16758	020220	0202	02	02022000	40





Data Quality Procedures

Data Validation

- Validation rules on data entry program

Data Cleaning

- Many checks on data are performed.
- Cooperation with traders and vat regional offices to correct errors and re-evaluation.

Comparison

- With official data sources (MOF, MNE)
- With partner countries (Jordan, and EU in particular)





Indicators

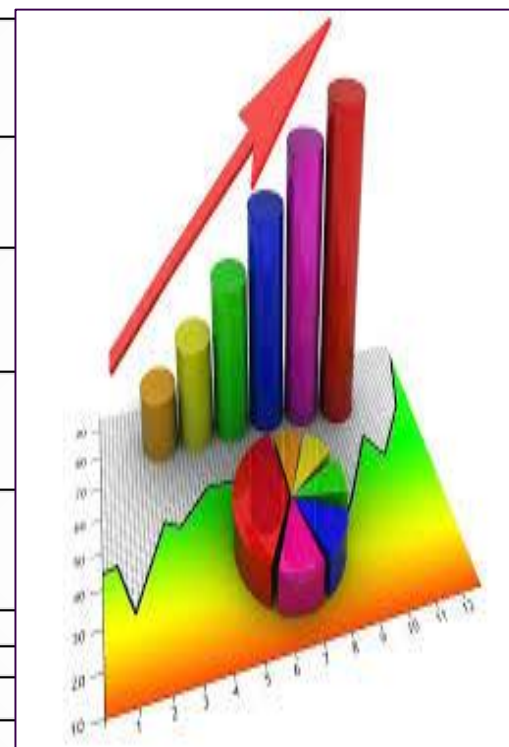
Trade by month, quarter.

Trade by partner country.

Trade by HS, BEC.

Trade by region and governorate.

Trade by entry & exit mean.





Publication & Dissemination



Monthly Press Releases

http://www.pcbs.gov.ps/pcbs_2012/PressEn.aspx



Detailed annual reports

http://www.pcbs.gov.ps/pcbs_2012/Publications.aspx



Statistical Tables

http://www.pcbs.gov.ps/site/lang_en/712/default.aspx



Department of User Services

DUS@pcbs.gov.ps



Interactive Database

<http://foreigntrade.pcbs.gov.ps/external-trade/>

Registered Foreign Trade Interactive Database

Step 1: Choosing the indicator (Import/Export/National exports / Re-exports)

Imports/Exports

include only exports

Exports Types

include both as total

Step 2: Choosing the period (Years / Months)

Years:

☒ 2015

☒ 2016

☒ 2017

☒ 2018

Months

To download data for the years 1996-2006 click here

Step 3: Choosing the geographical distribution for trade (Regions / Governorates / Countries)

Regions

☐

West Bank

☐

Gaza Strip

Governorates

Countries

Step 4: choosing the classification version and level of details (HS 2007/ HS 2012)

Classification version: ☐ H807 (2007-2013) ☒ H812 (2016-2018)

Sections: ☐ Select all sections

Chapters: ☐ Select all chapters

Groups: ☐ Select all groups

HS 6D: ☐ Select all HS 6D

Final Step : Show & download results

Show Data

10 rows per page

you can also get the data by showing them as CSV file or as Line Chart

Download as CSV

Show as Line chart

Reset

This table is showing the external trade data by Value in (1000 USD) in the years :2015,2016,2017,2018,2019, filtered by (Flow:Exports,) .

Indicator	2015	2016	2017	2018	2019
Exports	957811	926499	1064884	1155634	1103808



Thank you,,,

Husam Khalifa
hsamkh@pcbs.gov.ps