



# Population Census during Pandemic: Experience from Indonesia

Kemas Muhammad Irsan Riza  
BPS – Statistics Indonesia  
[irsan\\_riza@bps.go.id](mailto:irsan_riza@bps.go.id)



Webinar on “Remote Data Collection Methods to Overcome the Challenges Faced by the NSOs during the COVID-19 Pandemic”, 6 July 2021





# POPULATION CENSUS 2020



## GOALS



Provides data on number, composition, distribution, and characteristics of Indonesian population

► Completed in 2020



Provides demographic parameters (fertility, mortality, and migration) as well as other individual characteristics for **population projection** and **SDGs indicators**.

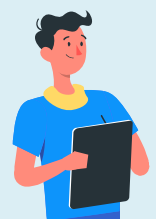
► Will be conducted in September 2021

## BASIC IMPROVEMENTS



### COMBINED METHOD

*The use of relevant administrative data (data managed by the ministry of home affairs) verified by census*



### MULTI-MODE DATA COLLECTION

*The use of several data collection mode such as self enumeration (using CAWI) and interview (CAPI/PAPI)*



**ONE POPULATION DATA IN INDONESIA**





PC2020 is the 7<sup>th</sup> Population Census



## 1<sup>st</sup> Online Census in Indonesia



“Documenting Indonesia toward  
**ONE POPULATION DATA**  
for Advanced Indonesia”

## Legal Basis



- **Law No. 16 of 1997** on Statistics
- **Law No. 23 of 2006** on Population Administration
- **Law No. 52 of 2009** on Population Development and Family Development
- **Law No. 24 of 2013** on The Amendment of Law No. 23 of 2006 on Population Administration
- **Government Regulation No. 51 of 1999** on Statistical Governance



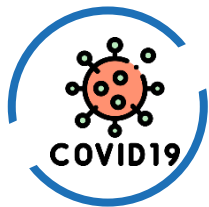
**United Nations Recommendation 2017**  
Population and Housing Census 2020



**Presidential Decree No. 39 of 2019**  
One Data Indonesia



**Presidential Decree No. 62 of 2019**  
National Strategies For The Acceleration of Population Administration  
For The Development of Vital Statistics



# POPULATION CENSUS DURING PANDEMIC

*Challenges and Responses*

## Challenges



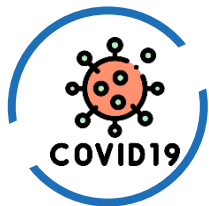
### Health Protocol:

- ✓ *Reducing face-to-face interactions due to the pandemic*
- ✓ *Use of Personal Protective Equipment (PPE)*  
– *mandatory for census countries*



**Budget reallocation for handling the pandemic**





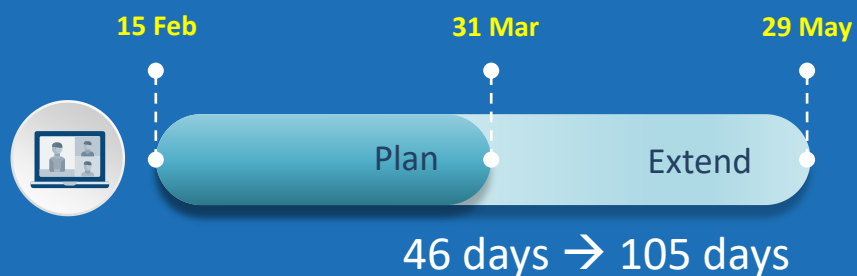
# POPULATION CENSUS DURING PANDEMIC

*Challenges and Responses*

## Responses



### Prolonged Online Census



### Strengthening Coordination and Publicity



**Targeted Segments:** Ministries, Institutions, and Organizations



Involving Regional Government



### Multiple Channels of Information Center

✗ PSTN Call Center

✓ Email

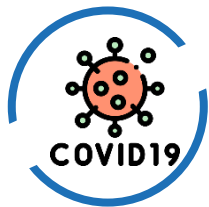
✓ Live Chat

✓ Whatsapp Call

✓ Social Media Channels

✓ Population Census Landing Page





# POPULATION CENSUS DURING PANDEMIC

*Challenges and Responses*

## Responses



### PPE Procurement



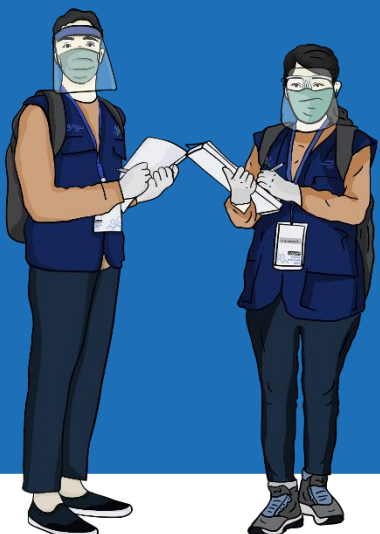
Mask



Face Shield



Hand Sanitizer



### Distance Training

- E-Learning using Video Conference
- Self-Learning using TV and Radio



### Drop Off Pick Up Questionnaire

- Field Force Explains how to Fill In the Form
- Self Enumeration
- Document Check by Field Force
- Less Interaction

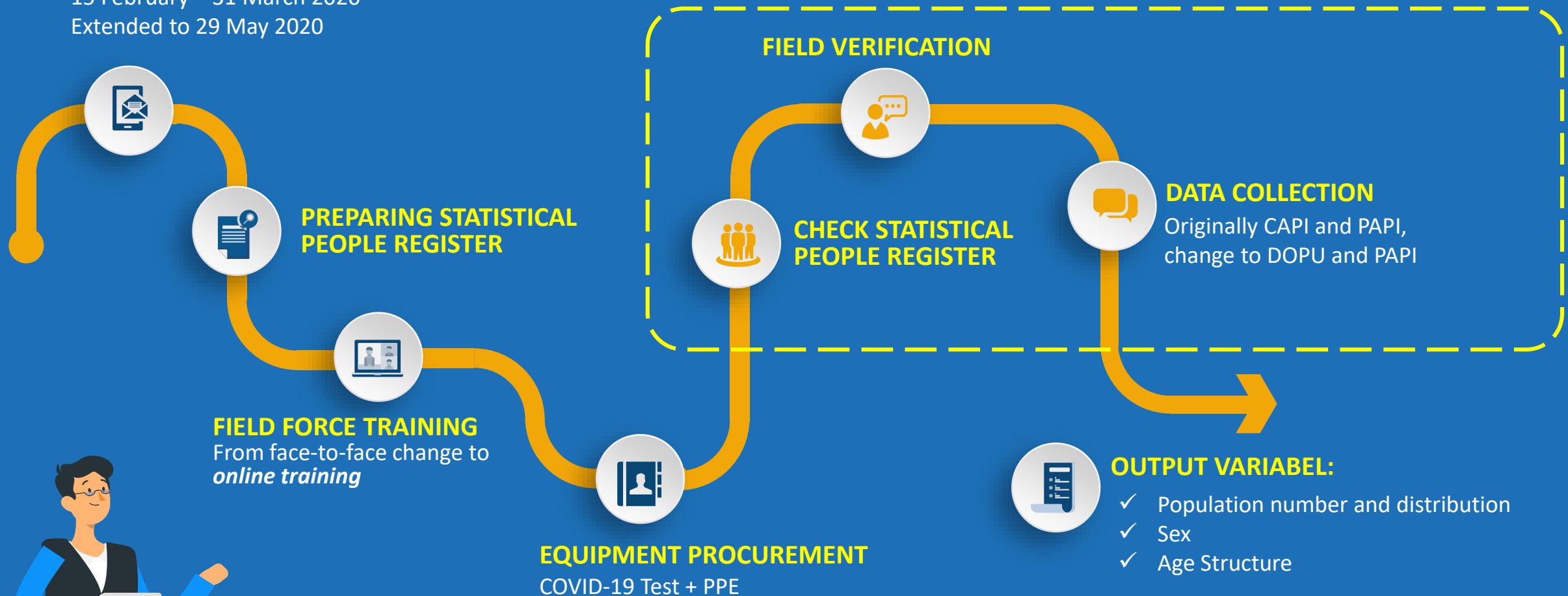
# Business Process Adjustment

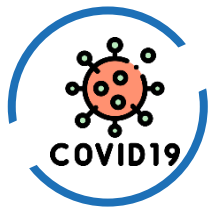
## ONLINE CENSUS

15 February – 31 March 2020  
Extended to 29 May 2020

## FIELD ACTIVITY

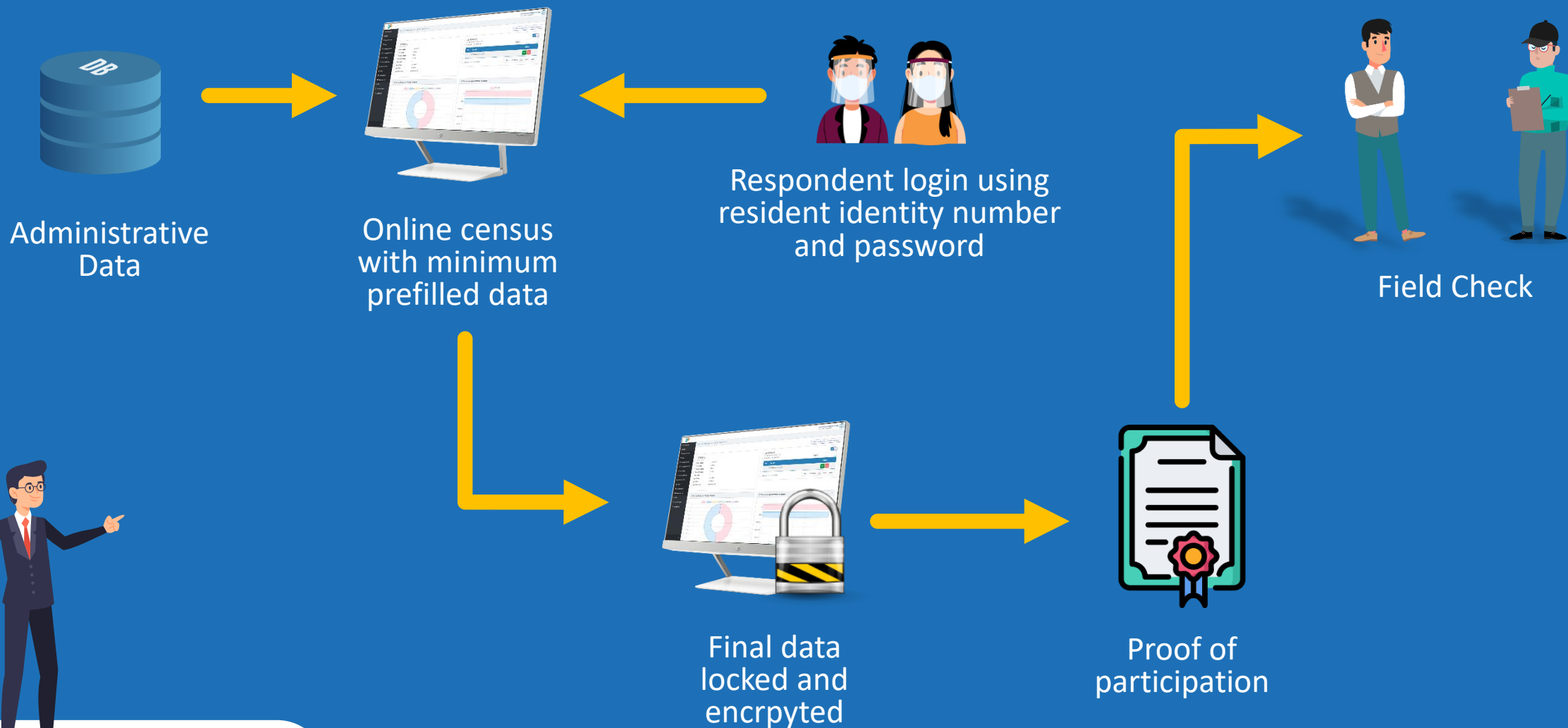
Originally planned on JULI 2020  
change to SEPTEMBER 2020





# ESTABLISH ONLINE CENSUS

*Preparation and Security*







## REFLECTIONS

- ❑ Strong legal basis is a must.
- ❑ Good coordination and publicity is a key factor for the successful census.
- ❑ Information center is essential to help people participate in census.
- ❑ Data security is top priority for establishing online census.
- ❑ Optimize e-learning and self-learning.
- ❑ Simplify business process, simplify output, reduce face-to-face interaction.
- ❑ Quickly adapt to change.





***Thank you***